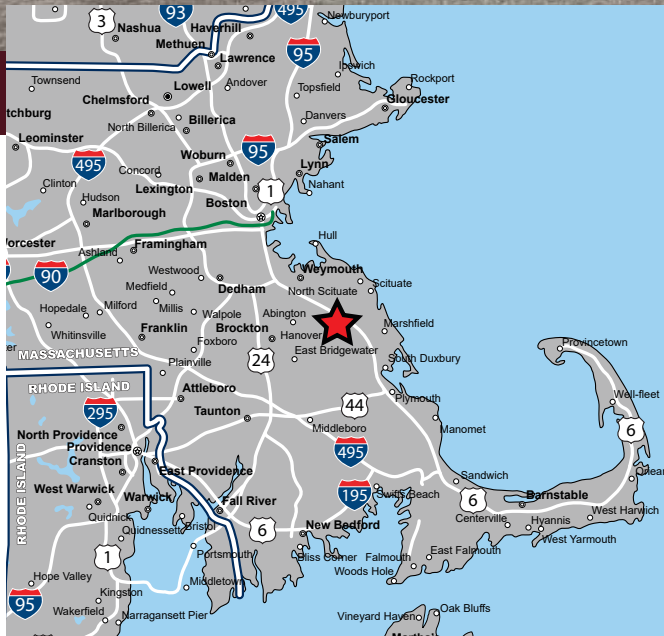


# PRIME INLINE SPACE

1810 Washington Street (Route 53), Hanover, Massachusetts



**AVAILABLE FOR LEASE**

## PROPERTY HIGHLIGHTS

- » 3,102 SF Prime Inline Space – Available Immediately
- » Positioned on RT 53 (29,773 ADT) directly off Exit 32
- » Located across from Hanover Crossing (Target, Trader Joe's, Macy's)
- » High-Income Trade Area
- » 3-Mile Median HH Income: \$176,438
- » Established Daily Traffic from Verizon, Jersey Mike's, Elements Massage, Dentists of Hanover & Love Nails
- » Excellent Visibility with Pylon Signage Available
- » Ample On-Site Parking with Direct Storefront Access
- » Ideal for Medical, Specialty Retail, Service, Fitness, Beauty, or Fast-Casual

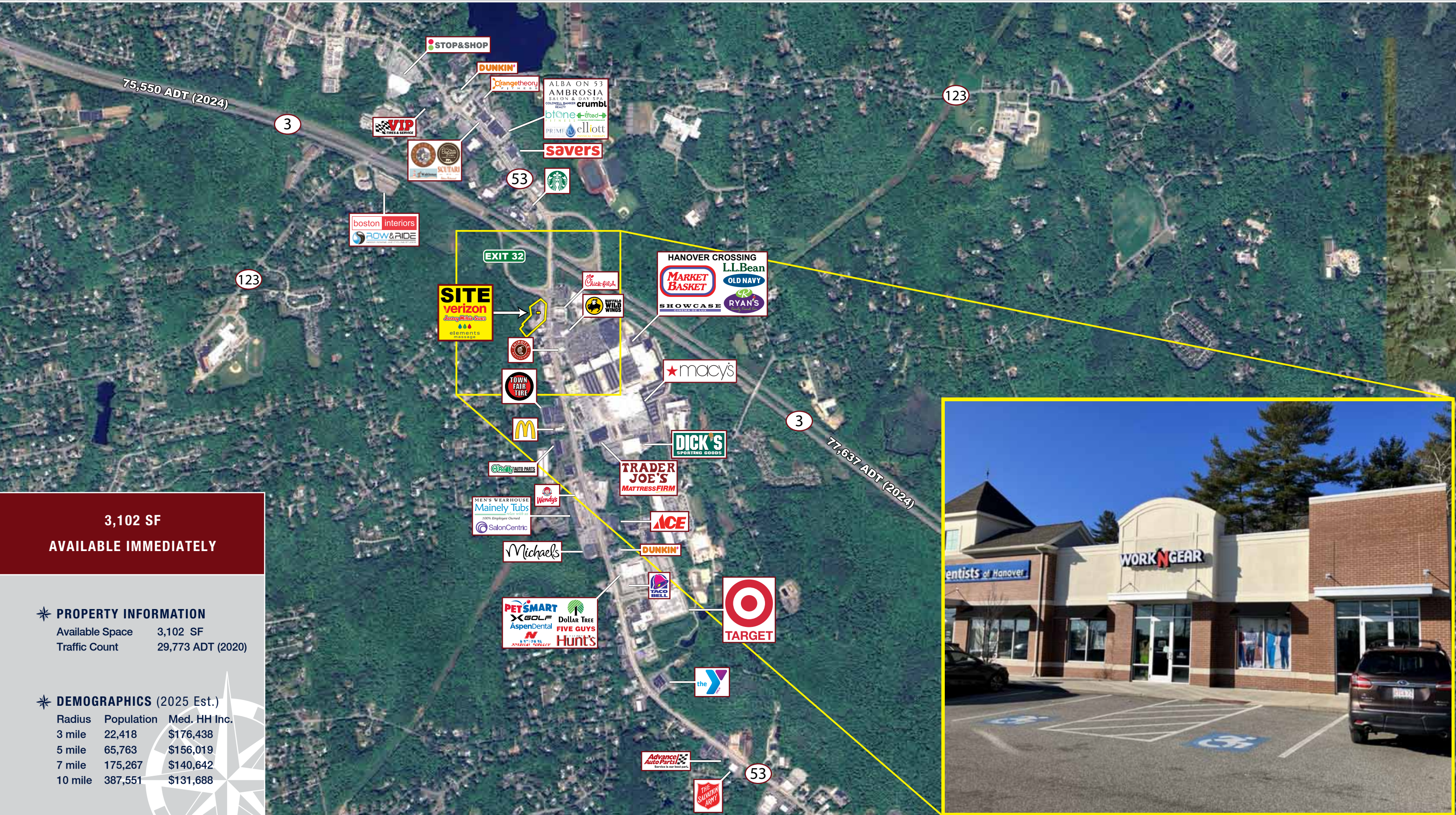


# PRIME INLINE SPACE

1810 Washington Street (Route 53), Hanover, Massachusetts



**EASTERN**  
RETAIL PROPERTIES



**3,102 SF**  
**AVAILABLE IMMEDIATELY**

**PROPERTY INFORMATION**

Available Space	3,102 SF
Traffic Count	29,773 ADT (2020)

**DEMOGRAPHICS (2025 Est.)**

Radius	Population	Med. HH Inc.
3 mile	22,418	\$176,438
5 mile	65,763	\$156,019
7 mile	175,267	\$140,642
10 mile	387,551	\$131,688

# PRIME INLINE SPACE

1810 Washington Street (Route 53), Hanover, Massachusetts





## 1810 Washington Street (Route 53), Hanover, Massachusetts



**EASTERN**  
RETAIL PROPERTIES

FOR MORE INFORMATION CONTACT:

**Mike Hotarek**

781.849.9017

mhotarek@easternretail.com

**Joe Morrison**

781.264.6225

jmorrison@easternretail.com

P 781.849.9010 + F 781.849.9050 + [www.easternretail.com](http://www.easternretail.com) + 25 Braintree Hill Office Park, Suite 404 + Braintree, MA 02184

The information above has been obtained from sources believed reliable. While we do not doubt its accuracy, we have not verified it and make no guarantee, warranty or representation about it. It is your responsibility to independently confirm its accuracy and completeness. Any projections, opinions, assumptions or estimates used are for example only and do not represent the current or future performance of the property. The value of this transaction to you depends on tax and other factors, which should be evaluated by your tax and financial advisors. You and your advisors should conduct a careful, independent investigation of the property to determine to your satisfaction, the suitability of the property for your needs.