

PORTSMOUTH GREEN

2454 Lafayette Road (Route 1), Portsmouth, New Hampshire



AVAILABLE FOR LEASE

PROPERTY HIGHLIGHTS

- » Premier Open Air Shopping Center on NH Seacoast
- » 1,400 SF and up to 33,306 SF Available
- » Join McKinnon's Supermarket, Madeline's Daughter, Tesla, Starbucks, Chipotle, Athleta, & More
- » Strong Mix of High End Fashion Retailers, Boutique Fitness, Quick Service Restaurants, and Daily Convenience
- » Regional Trade Area
- » Signalized Access from Route 1
- » Conveniently Accessible from I-95
- » Trades High Income Surrounding Towns

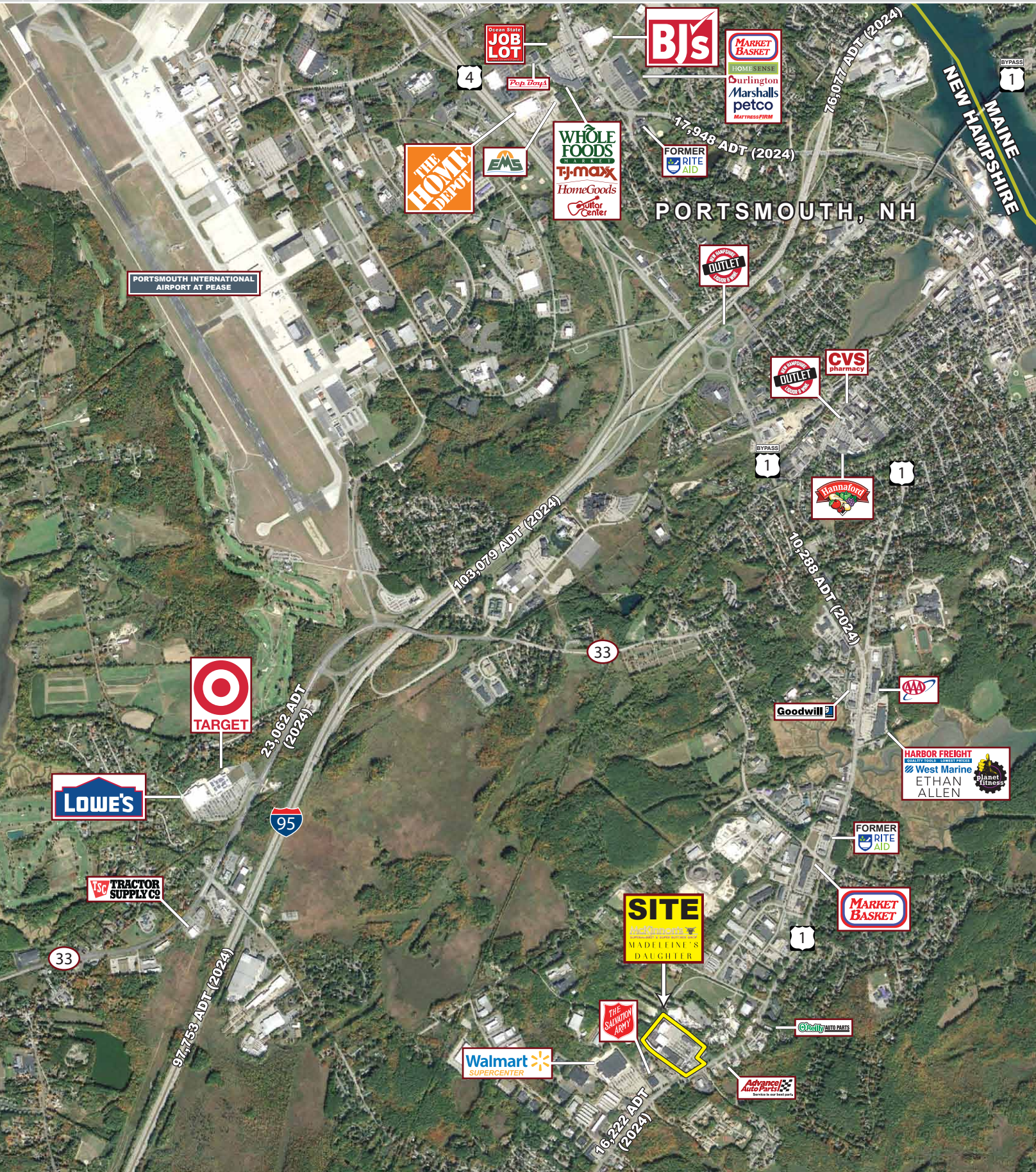


PORTSMOUTH GREEN

2454 Lafayette Road (Route 1), Portsmouth, New Hampshire



EASTERN
RETAIL PROPERTIES



✦ **PROPERTY INFORMATION**

Available Space 1,400 SF
 33,306 SF
 Traffic Count 16,222 ADT

✦ **DEMOGRAPHICS (2025 Est.)**

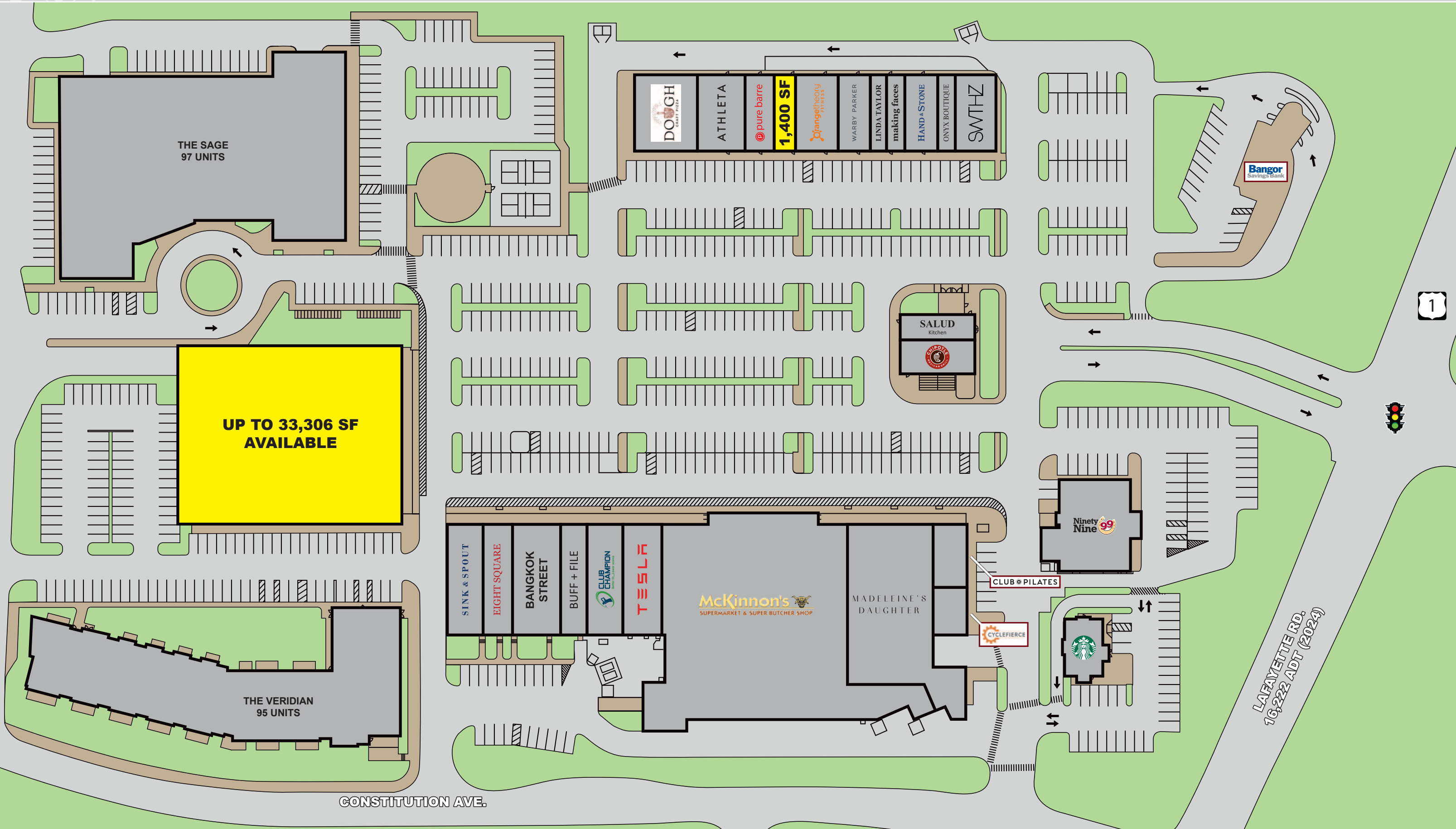
Radius	Population	Med. HH Inc.
3 mile	23,015	\$122,745
5 mile	43,398	\$119,001
7 mile	67,132	\$121,633

PORTSMOUTH GREEN

2454 Lafayette Road (Route 1), Portsmouth, New Hampshire



EASTERN
RETAIL PROPERTIES



PORTSMOUTH GREEN

2454 Lafayette Road (Route 1), Portsmouth, New Hampshire



EASTERN
RETAIL PROPERTIES





Portsmouth Green - 2454 Lafayette Road (Route 1), Portsmouth, New Hampshire



EASTERN
RETAIL PROPERTIES

FOR MORE INFORMATION CONTACT:

Andrew Bonica

781.849.9011

abonica@easternretail.com

Sam Peterson

781.849.9016

speterson@easternretail.com

P 781.849.9010 + F 781.849.9050 + www.easternretail.com + 25 Braintree Hill Office Park, Suite 404 + Braintree, MA 02184

The information above has been obtained from sources believed reliable. While we do not doubt its accuracy, we have not verified it and make no guarantee, warranty or representation about it. It is your responsibility to independently confirm its accuracy and completeness. Any projections, opinions, assumptions or estimates used are for example only and do not represent the current or future performance of the property. The value of this transaction to you depends on tax and other factors, which should be evaluated by your tax and financial advisors. You and your advisors should conduct a careful, independent investigation of the property to determine to your satisfaction, the suitability of the property for your needs.