

RETAIL OPPORTUNITY

1212 S. Washington Street (Route 1), N.Attleboro, Massachusetts



AVAILABLE FOR LEASE

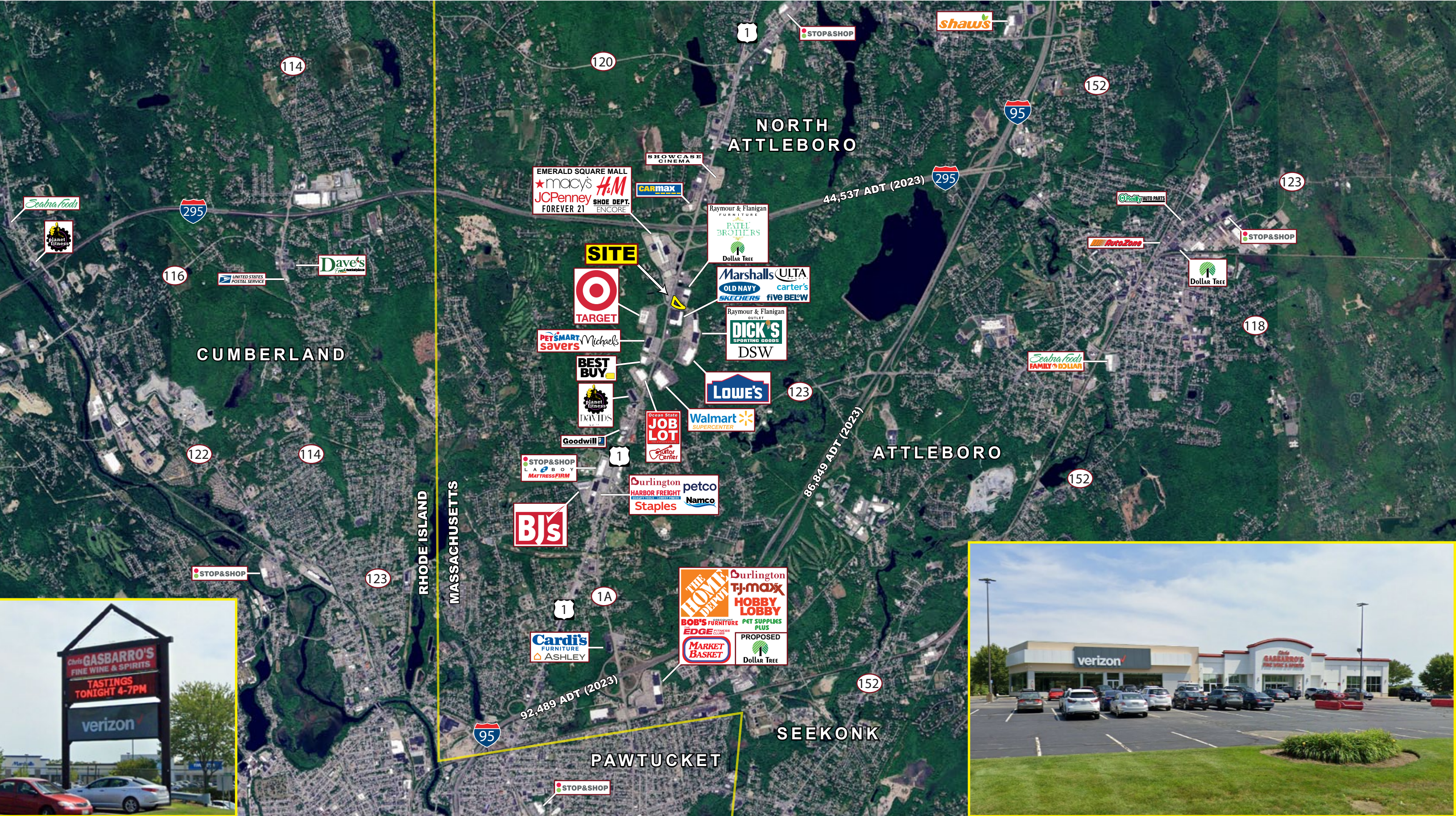
PROPERTY HIGHLIGHTS

- » 22,500 +/- SF (Subdividable)
- » Three Loading Docks
- » Pylon Signage Available
- » Signalized Access to Route 1
- » Conveniently Located at Exit 2 off I-295
- » Excellent Visibility & Access
- » Dominant Regional Trade Area
- » Strong Co-Tenancy with Verizon



RETAIL OPPORTUNITY

1212 South Washington Street (Route 1), North Attleboro, Massachusetts





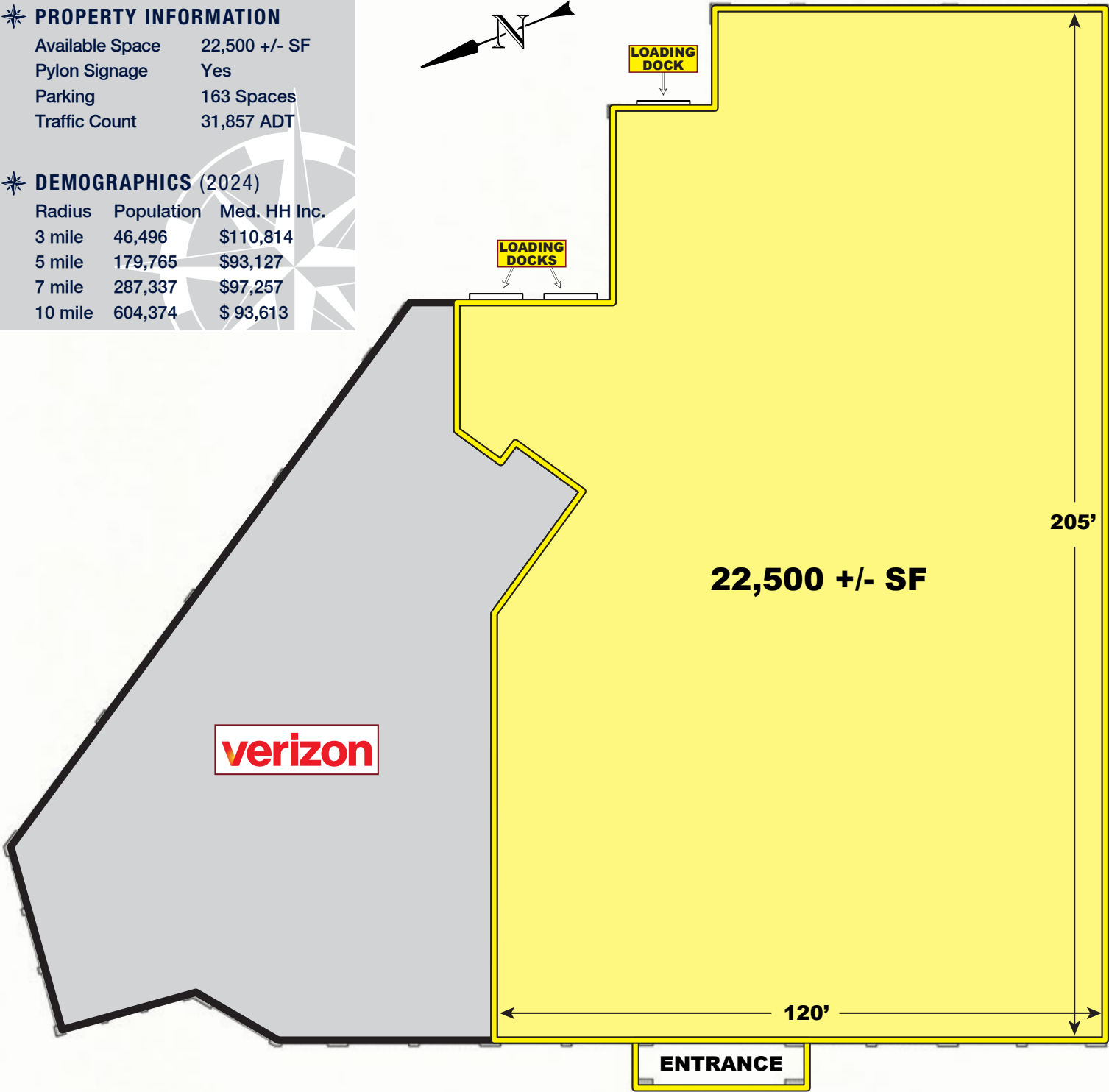
PROPERTY INFORMATION

Available Space 22,500 +/- SF
Pylon Signage Yes
Parking 163 Spaces
Traffic Count 31,857 ADT



DEMOGRAPHICS (2024)

Radius	Population	Med. HH Inc.
3 mile	46,496	\$110,814
5 mile	179,765	\$93,127
7 mile	287,337	\$97,257
10 mile	604,374	\$ 93,613



1212 South Washington Street (Route 1), North Attleboro, Massachusetts



EASTERN
RETAIL PROPERTIES

FOR MORE INFORMATION CONTACT:

Michael Hotarek

781.849.9017

mhotarek@easternretail.com

Tommy Landry

781.849.9015

tlandry@easternretail.com

P 781.849.9010 + F 781.849.9050 + www.easternretail.com + 25 Braintree Hill Office Park, Suite 404 + Braintree, MA 02184

The information above has been obtained from sources believed reliable. While we do not doubt its accuracy, we have not verified it and make no guarantee, warranty or representation about it. It is your responsibility to independently confirm its accuracy and completeness. Any projections, opinions, assumptions or estimates used are for example only and do not represent the current or future performance of the property. The value of this transaction to you depends on tax and other factors, which should be evaluated by your tax and financial advisors. You and your advisors should conduct a careful, independent investigation of the property to determine to your satisfaction, the suitability of the property for your needs.