

FORMER JOANN

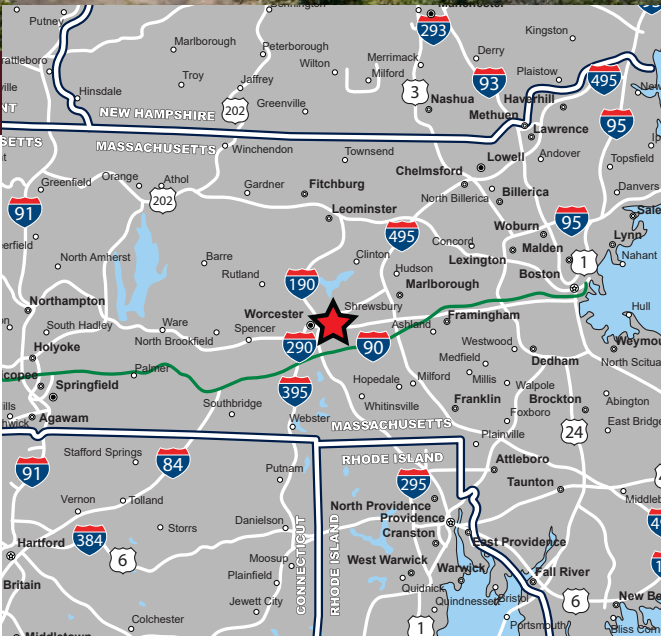
1000 Boston Turnpike (Route 9), Shrewsbury, Massachusetts



AVAILABLE FOR LEASE

PROPERTY HIGHLIGHTS

- » 19,828 SF Available For Lease
- » Direct Exposure on Route 9
- » Ample Parking
- » Pylon Signage Available
- » Proposed Pad Sites Available
- » Open Ceiling Plan
- » 12'3" Clear Height to the Bottom of the Joist



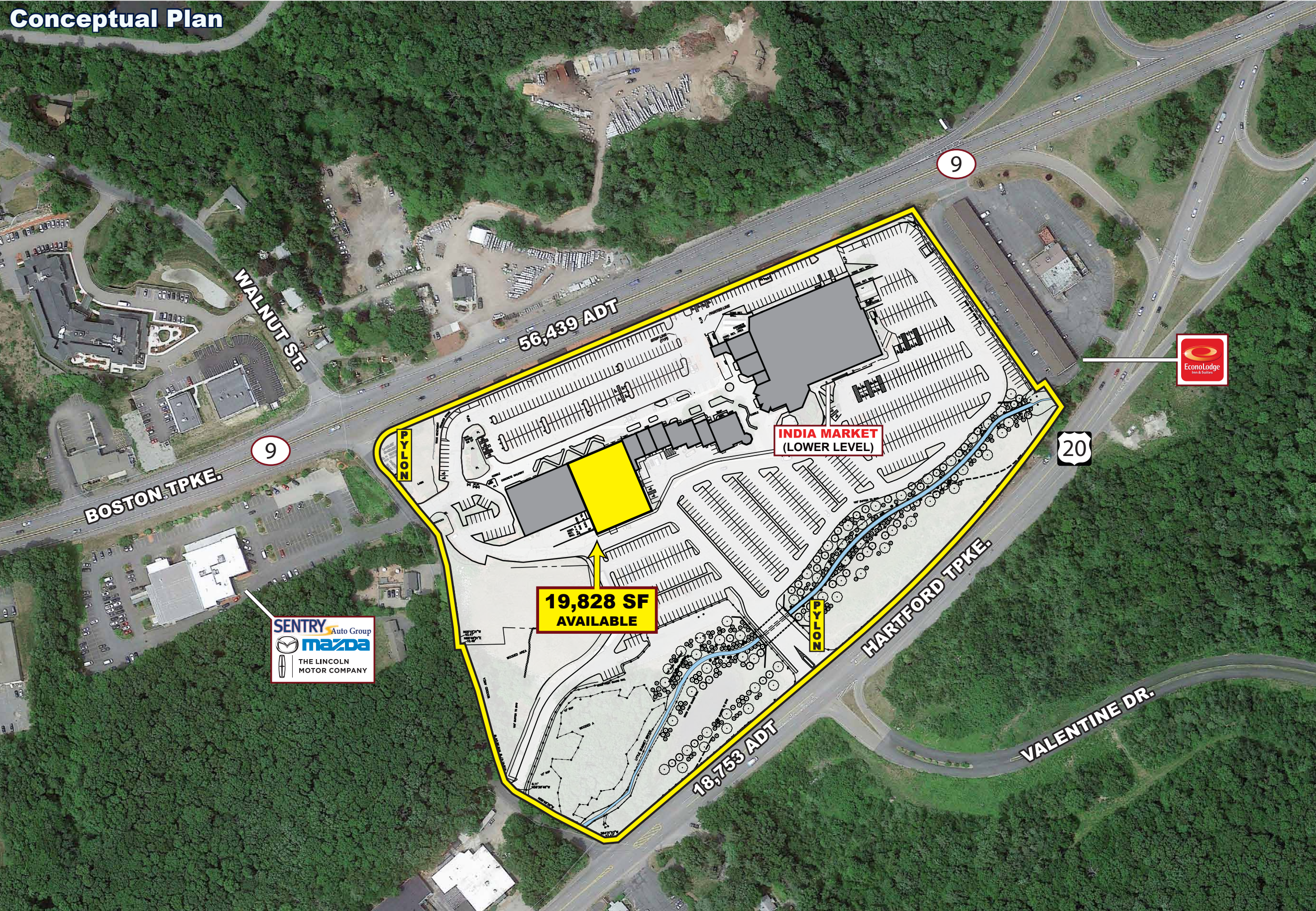
FORMER JOANN

1000 Boston Turnpike (Route 9), Shrewsbury, Massachusetts



EASTERN
RETAIL PROPERTIES

Conceptual Plan



19,828 SF
AVAILABLE IMMEDIATELY

PROPERTY INFORMATION

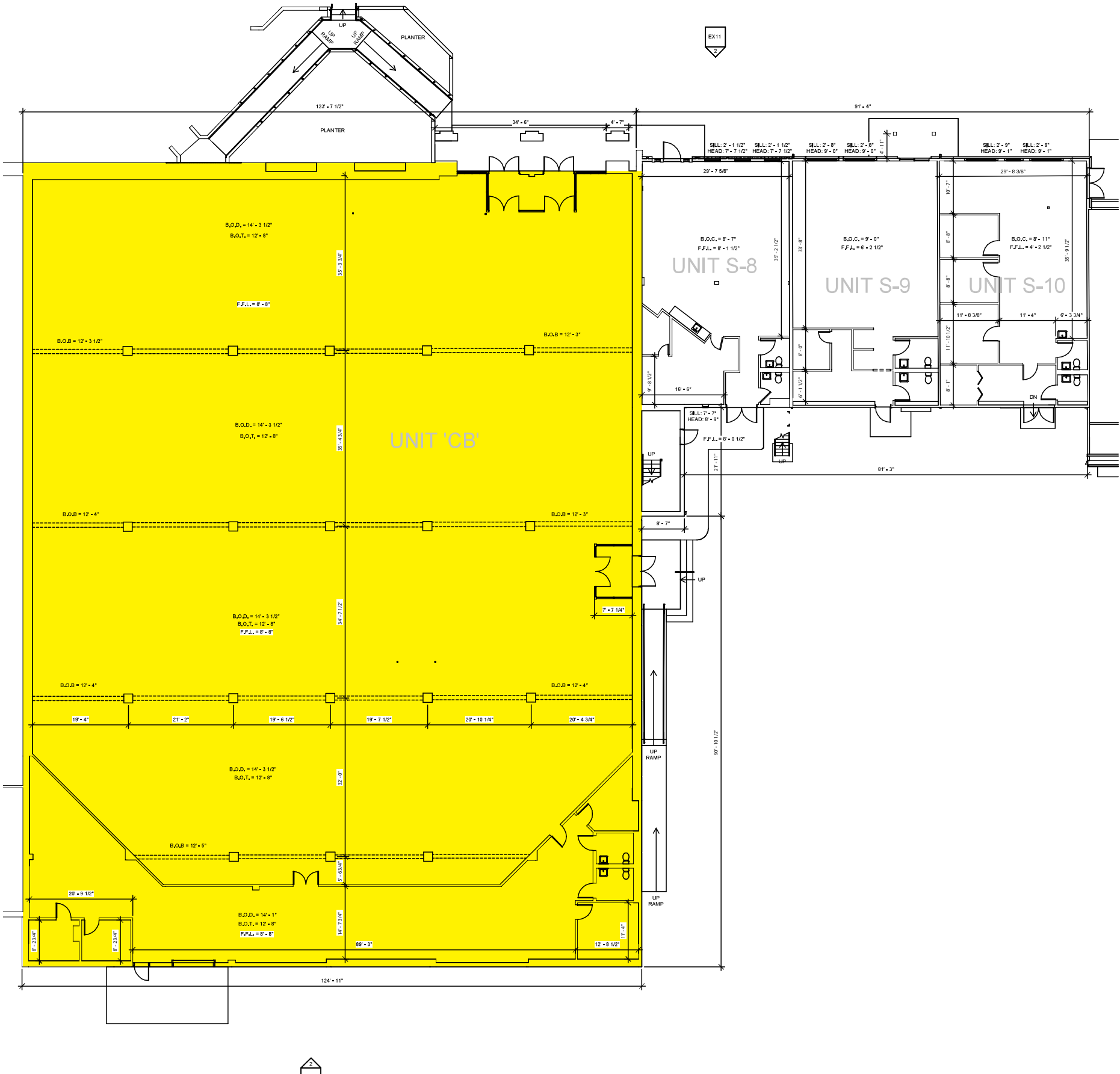
Available Space	19,828 SF
Traffic Count	56,439 ADT

DEMOGRAPHICS (2024 Est.)

Radius	Population	Med. HH Inc.
1 mile	6,416	\$139,125
3 mile	38,042	\$152,041
5 mile	98,309	\$136,533
7 mile	229,049	\$104,894

FORMER JOANN

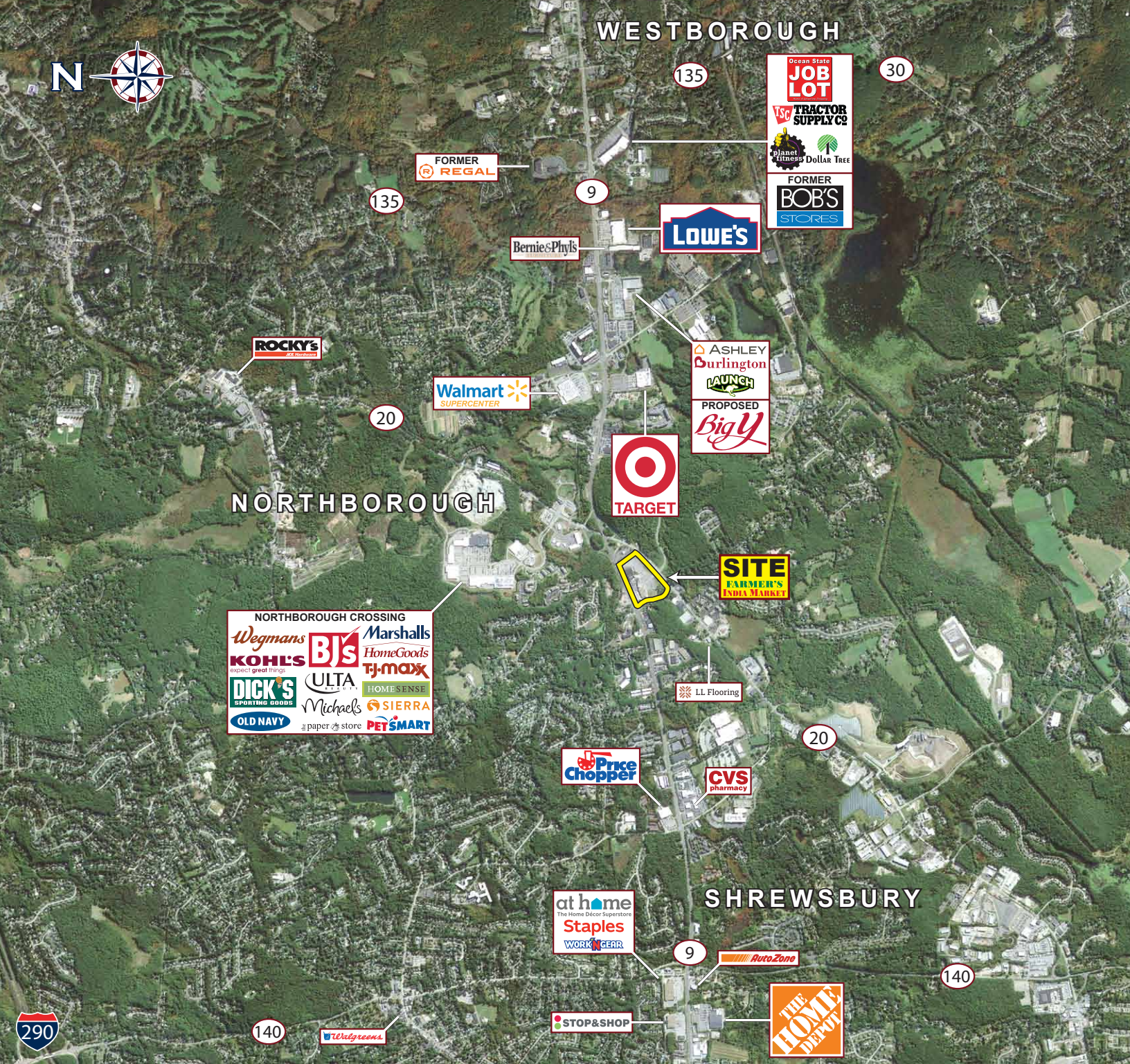
1000 Boston Turnpike (Route 9), Shrewsbury, Massachusetts



FORMER JOANN

1000 Boston Turnpike (Route 9), Shrewsbury, Massachusetts





Former Joann - 1000 Boston Tpke. (Route 9), Shrewsbury, Massachusetts



FOR MORE INFORMATION CONTACT:

Vin Albanese

781.849.9013 (Office) + 617.413.1193 (Cell)

valbanese@easternretail.com

P 781.849.9010 + F 781.849.9050 + www.easternretail.com + 25 Braintree Hill Office Park, Suite 404 + Braintree, MA 02184

The information above has been obtained from sources believed reliable. While we do not doubt its accuracy, we have not verified it and make no guarantee, warranty or representation about it. It is your responsibility to independently confirm its accuracy and completeness. Any projections, opinions, assumptions or estimates used are for example only and do not represent the current or future performance of the property. The value of this transaction to you depends on tax and other factors, which should be evaluated by your tax and financial advisors. You and your advisors should conduct a careful, independent investigation of the property to determine to your satisfaction, the suitability of the property for your needs.