

RETAIL OPPORTUNITY

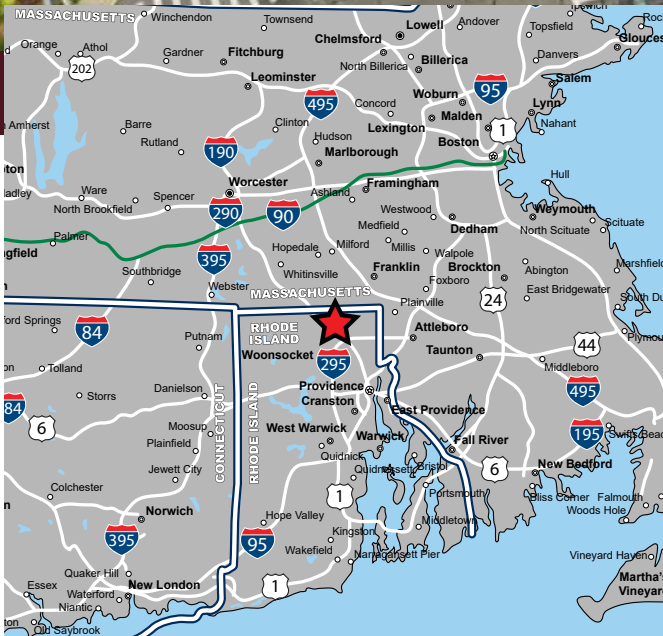
1400 Park Avenue, Woonsocket, Rhode Island



AVAILABLE FOR LEASE

PROPERTY HIGHLIGHTS

- » 2,100 SF up to 39,624 SF of Contiguous Space Available
- » Excellent Visibility & Access
- » Dominant Regional Trade Area
- » Pylon Signage Available
- » Abundant Parking
- » Nearby Retailers: Walmart, Lowe's, Kohl's, ALDI, Stop & Shop



RETAIL OPPORTUNITY

1400 Park Avenue, Woonsocket, Rhode Island



**2,100 SF UP TO 39,624 SF
AVAILABLE IMMEDIATELY**

*** DEMOGRAPHICS (2024 Est.)**

Radius	Population	Med. HH Inc.
3 mile	63,151	\$70,547
5 mile	97,525	\$85,982
7 mile	137,964	\$98,322
10 mile	358,903	\$94,761

RETAIL OPPORTUNITY

1400 Park Avenue, Woonsocket, Rhode Island



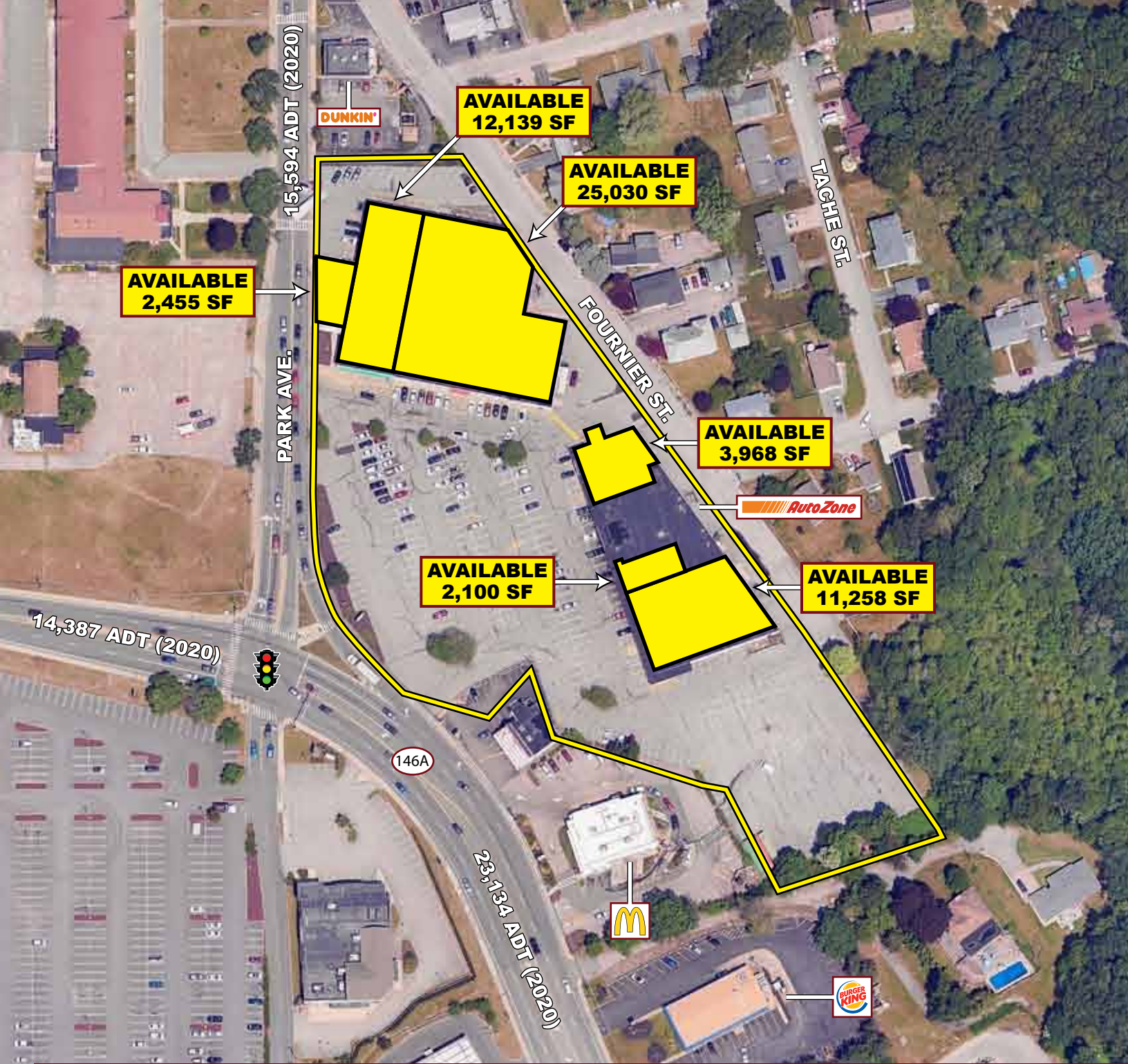
EASTERN
RETAIL PROPERTIES



RETAIL OPPORTUNITY

1400 Park Avenue, Woonsocket, Rhode Island





Retail Opportunity - 1400 Park Avenue, Woonsocket, Rhode Island



FOR MORE INFORMATION CONTACT:

Andrew Bonica

781.849.9011

abonica@easternretail.com

Tommy Landry

781.849-9015

tlandry@easternretail.com

P 781.849.9010 + F 781.849.9050 + www.easternretail.com + 25 Braintree Hill Office Park, Suite 305 + Braintree, MA 02184

The information above has been obtained from sources believed reliable. While we do not doubt its accuracy, we have not verified it and make no guarantee, warranty or representation about it. It is your responsibility to independently confirm its accuracy and completeness. Any projections, opinions, assumptions or estimates used are for example only and do not represent the current or future performance of the property. The value of this transaction to you depends on tax and other factors, which should be evaluated by your tax and financial advisors. You and your advisors should conduct a careful, independent investigation of the property to determine to your satisfaction, the suitability of the property for your needs.