

BUTTONWOODS PLAZA

3030 West Shore Road (Route 117), Warwick, Rhode Island



**AVAILABLE
8,059 SF**

**AVAILABLE
10,380 SF**

**AVAILABLE
25,589 SF**

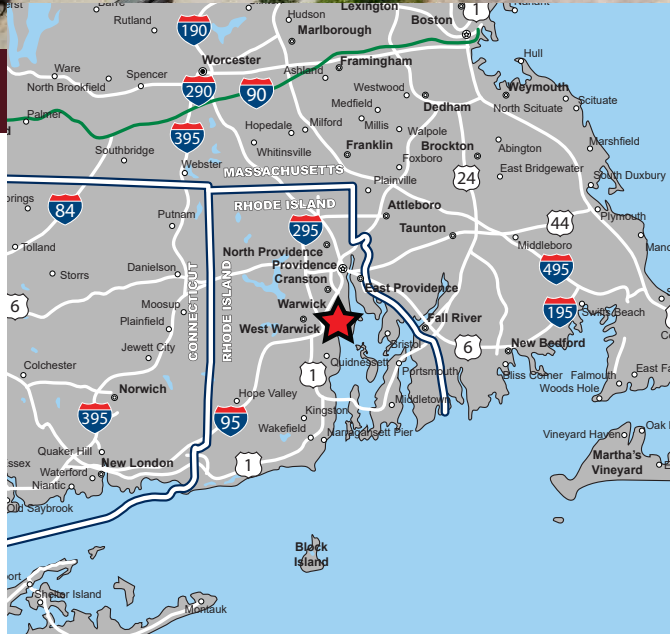
**AVAILABLE
16,503 SF**

BUTTONWOODS AVE.

2,932 ADT (2020)

**117
W. SHORE RD.
17,288 ADT (2020)**

AVAILABLE FOR LEASE



PROPERTY HIGHLIGHTS

- » 8,059 SF up to 42,092 SF of Contiguous Space Available
- » Excellent Visibility & Access
- » Dominant Regional Trade Area
- » Pylon Signage Available
- » Abundant Parking
- » Densely Populated Trade Area

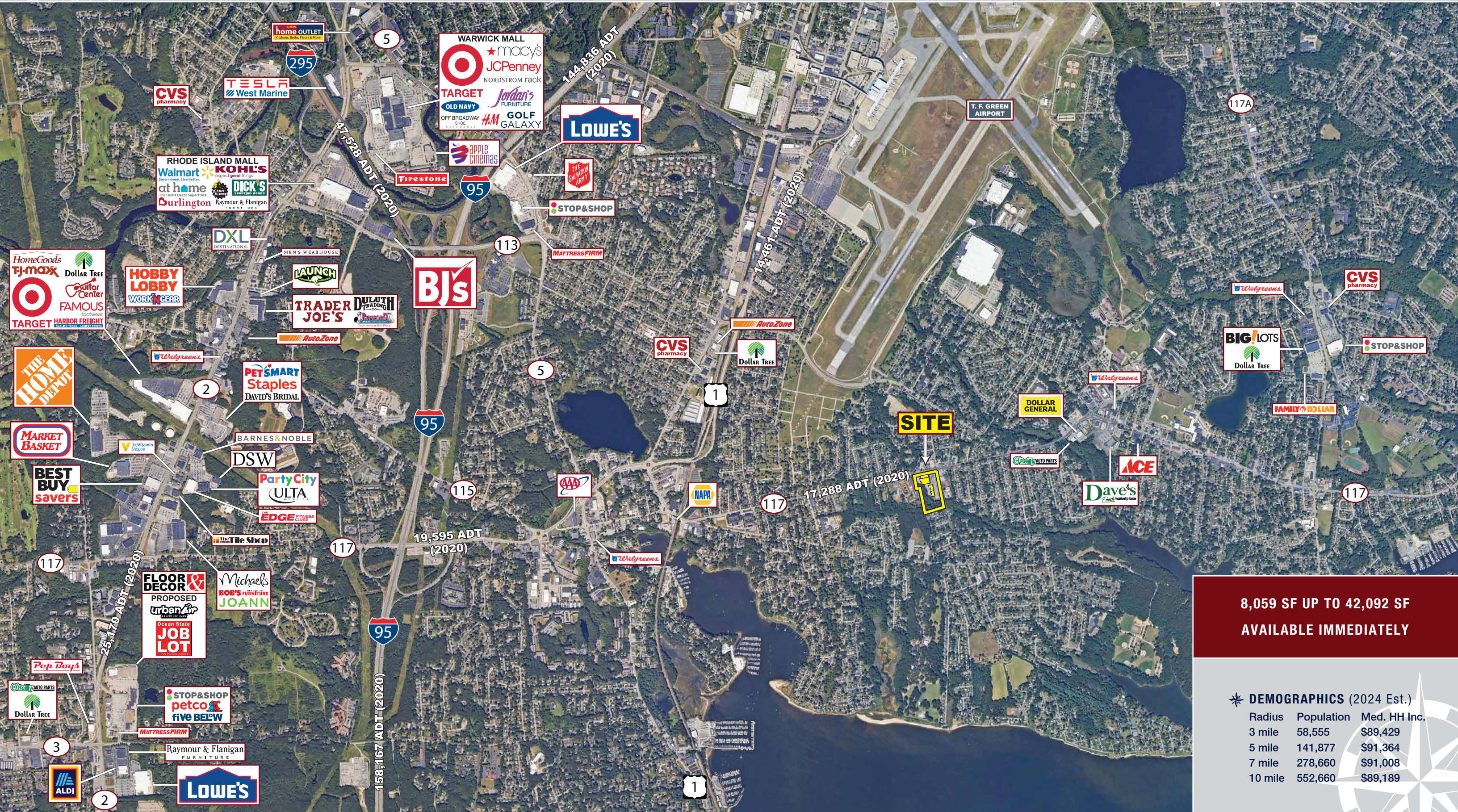


BUTTONWOODS PLAZA

3030 West Shore Road (Route 117), Warwick, Rhode Island



EASTERN
RETAIL PROPERTIES



**8,059 SF UP TO 42,092 SF
AVAILABLE IMMEDIATELY**

★ DEMOGRAPHICS (2024 Est.)

Radius	Population	Med. HH Inc.
3 mile	58,555	\$89,429
5 mile	141,877	\$91,364
7 mile	278,660	\$91,008
10 mile	552,660	\$89,189

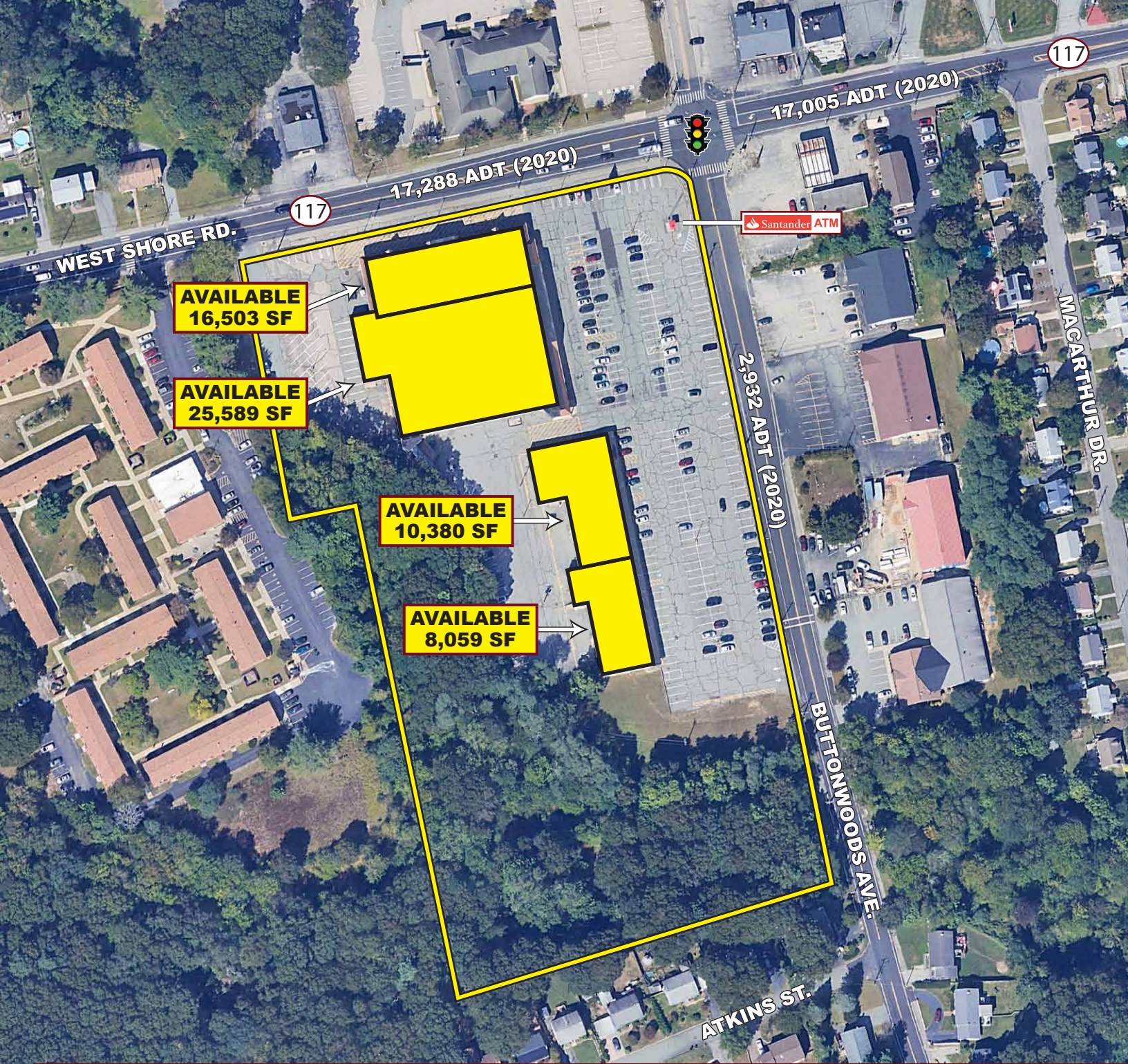
BUTTONWOODS PLAZA

3030 West Shore Road (Route 117), Warwick, Rhode Island



EASTERN
RETAIL PROPERTIES





Buttonwoods Plaza - 3030 West Shore Road (Route 117), Warwick, Rhode Island



EASTERN
RETAIL PROPERTIES

FOR MORE INFORMATION CONTACT:

Andrew Bonica

781.849.9011

abonica@easternretail.com

Tommy Landry

781.849-9015

tlandry@easternretail.com

P 781.849.9010 + F 781.849.9050 + www.easternretail.com + 25 Braintree Hill Office Park, Suite 404 + Braintree, MA 02184

The information above has been obtained from sources believed reliable. While we do not doubt its accuracy, we have not verified it and make no guarantee, warranty or representation about it. It is your responsibility to independently confirm its accuracy and completeness. Any projections, opinions, assumptions or estimates used are for example only and do not represent the current or future performance of the property. The value of this transaction to you depends on tax and other factors, which should be evaluated by your tax and financial advisors. You and your advisors should conduct a careful, independent investigation of the property to determine to your satisfaction, the suitability of the property for your needs.