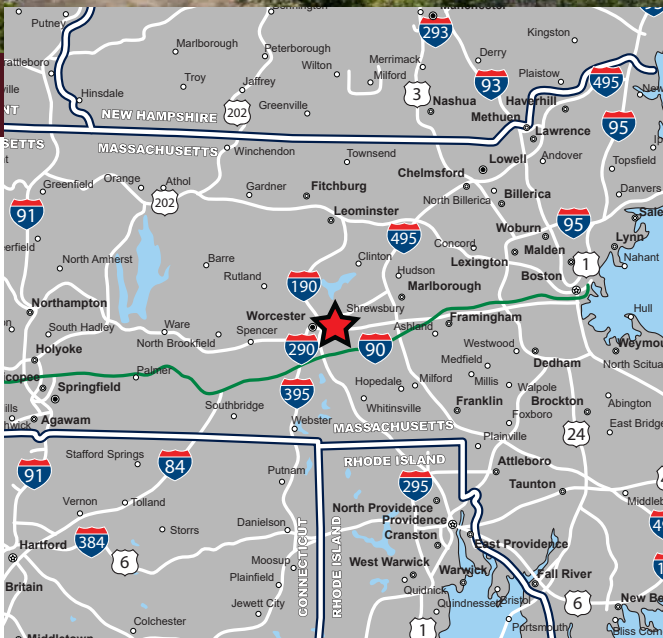


PROPOSED PAD SITES

1000 Boston Turnpike (Route 9), Shrewsbury, Massachusetts



DEVELOPMENT OPPORTUNITY

PROPERTY HIGHLIGHTS

- » Proposed Pad Sites - Flexible Sizes and Location on Site
- » 1,690-11,920 SF Buildings Subject to Permits
- » Various Restaurant Pad Layouts
- » Residential/Medical/Hotel/Day Care Uses Allowed
- » New Parking Field
- » Fronts on Route 9 & 20
- » Pylon Signage Available



EASTERN
RETAIL PROPERTIES

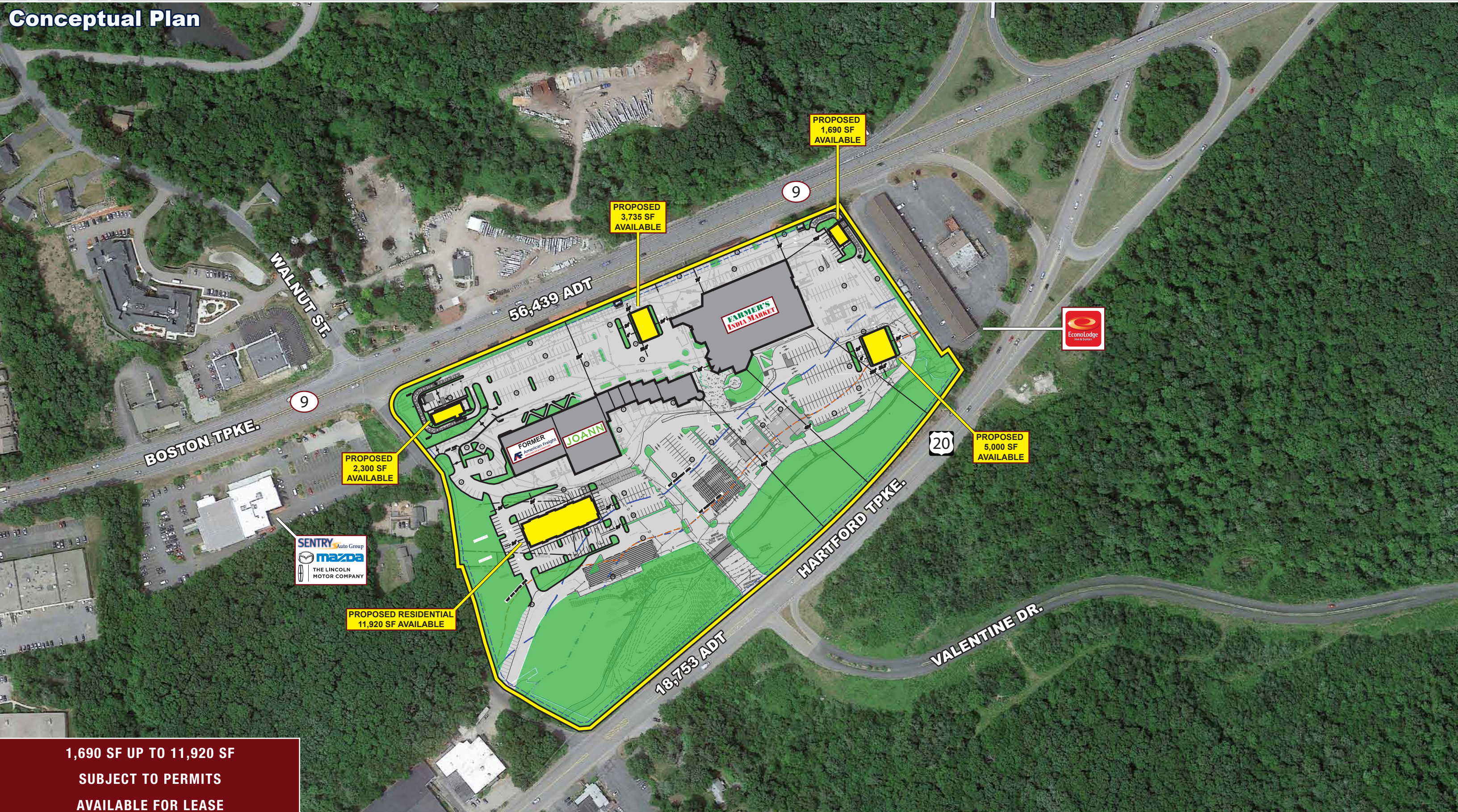
PROPOSED PAD SITES

1000 Boston Turnpike (Route 9), Shrewsbury, Massachusetts



EASTERN
RETAIL PROPERTIES

Conceptual Plan



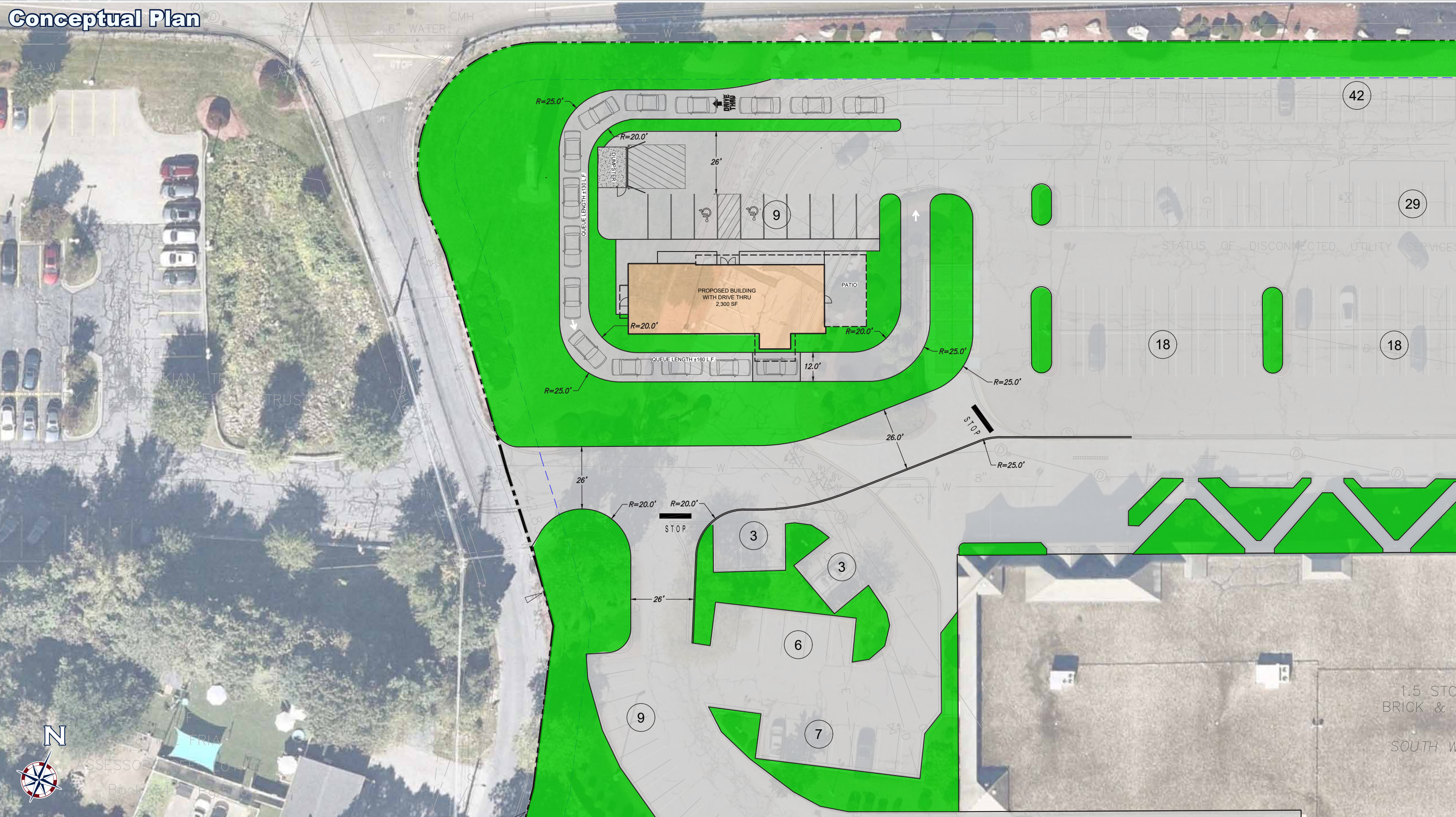
1,690 SF UP TO 11,920 SF
SUBJECT TO PERMITS
AVAILABLE FOR LEASE

PROPOSED PAD SITES

1000 Boston Turnpike (Route 9), Shrewsbury, Massachusetts

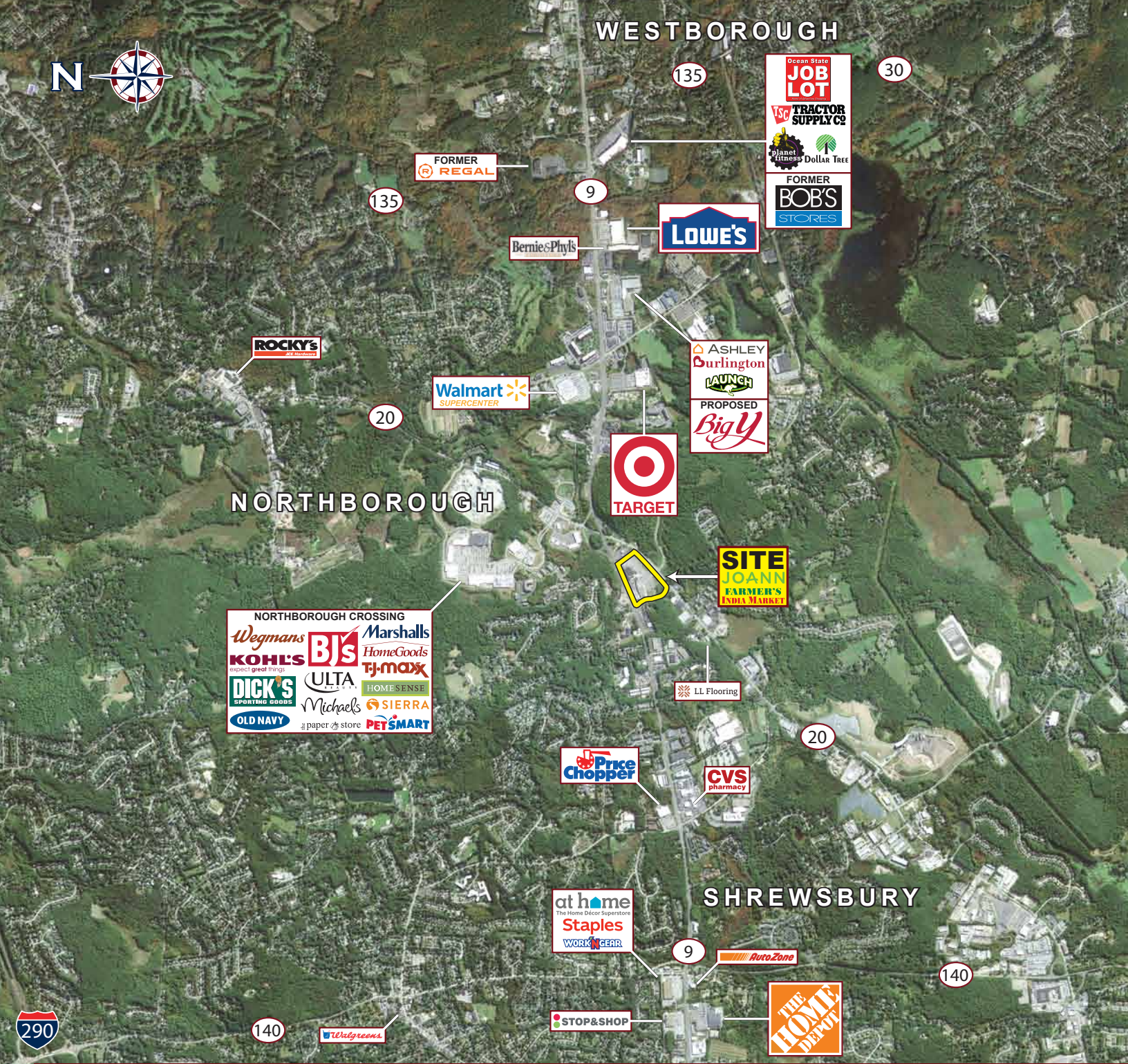


Conceptual Plan



ASSASSOR & PL FRIAN
Book 243 Pg 516

1.5 STO
BRICK &
SOUTH W



Proposed Pad Sites - 1000 Boston Tpke. (Route 9), Shrewsbury, Massachusetts



FOR MORE INFORMATION CONTACT:

Vin Albanese
 781.849.9013 (Office) + 617.413.1193 (Cell)
 valbanese@easternretail.com

P 781.849.9010 + F 781.849.9050 + www.easternretail.com + 25 Braintree Hill Office Park, Suite 404 + Braintree, MA 02184

The information above has been obtained from sources believed reliable. While we do not doubt its accuracy, we have not verified it and make no guarantee, warranty or representation about it. It is your responsibility to independently confirm its accuracy and completeness. Any projections, opinions, assumptions or estimates used are for example only and do not represent the current or future performance of the property. The value of this transaction to you depends on tax and other factors, which should be evaluated by your tax and financial advisors. You and your advisors should conduct a careful, independent investigation of the property to determine to your satisfaction, the suitability of the property for your needs.