

# FORMER BANK BRANCH

39 Home Depot Drive, Plymouth, Massachusetts



AVAILABLE FOR LEASE

## PROPERTY HIGHLIGHTS

- » 3,600 SF Former Bank Branch Sits Adjacent to West Marine
- » Fully Turn-key with Safe, Safe Deposit Boxes, Teller Windows and Private Offices.
- » Can be Converted to Retail or Medical
- » Two Drive-up Windows and Separate ATM Lane
- » Successful 250,000 SF Retail Center
- » Adjacent to 'The Oasis' - New 327 Unit Luxury Apartment Development
- » Co-tenants Include the Ninety-Nine Restaurant, AT&T, AAA, The UPS Store, Town Fair Tire and more
- » Pylon Signage Available
- » Ample On-Site Parking



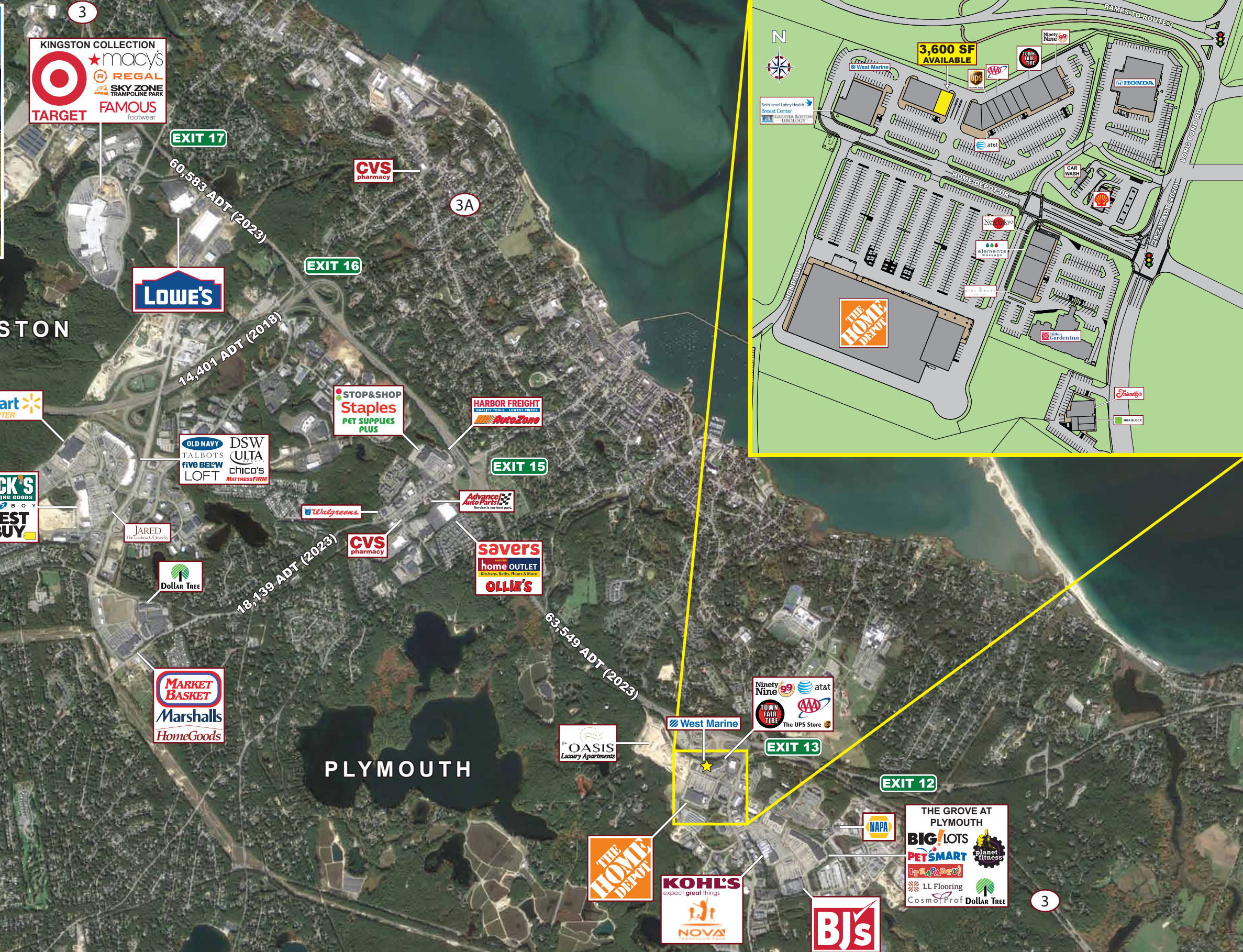


# FORMER BANK BRANCH

39 Home Depot Drive, Plymouth, Massachusetts



**'THE OASIS'**  
327 LUXURY APARTMENTS



**3,600 SF**  
**AVAILABLE**

★ **DEMOGRAPHICS (2024 Est.)**

Radius	Population	Med. HH Inc.
1 mile	3,733	\$92,618
3 mile	22,458	\$98,969
5 mile	41,930	\$107,310
7 mile	67,955	\$113,633



# FORMER BANK BRANCH

39 Home Depot Drive, Plymouth, Massachusetts



**EASTERN**  
RETAIL PROPERTIES

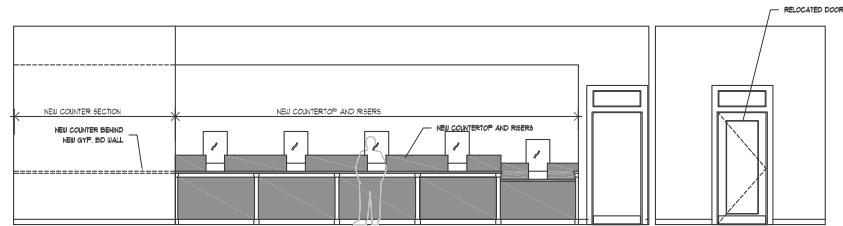


ADJACENT TO THE SITE

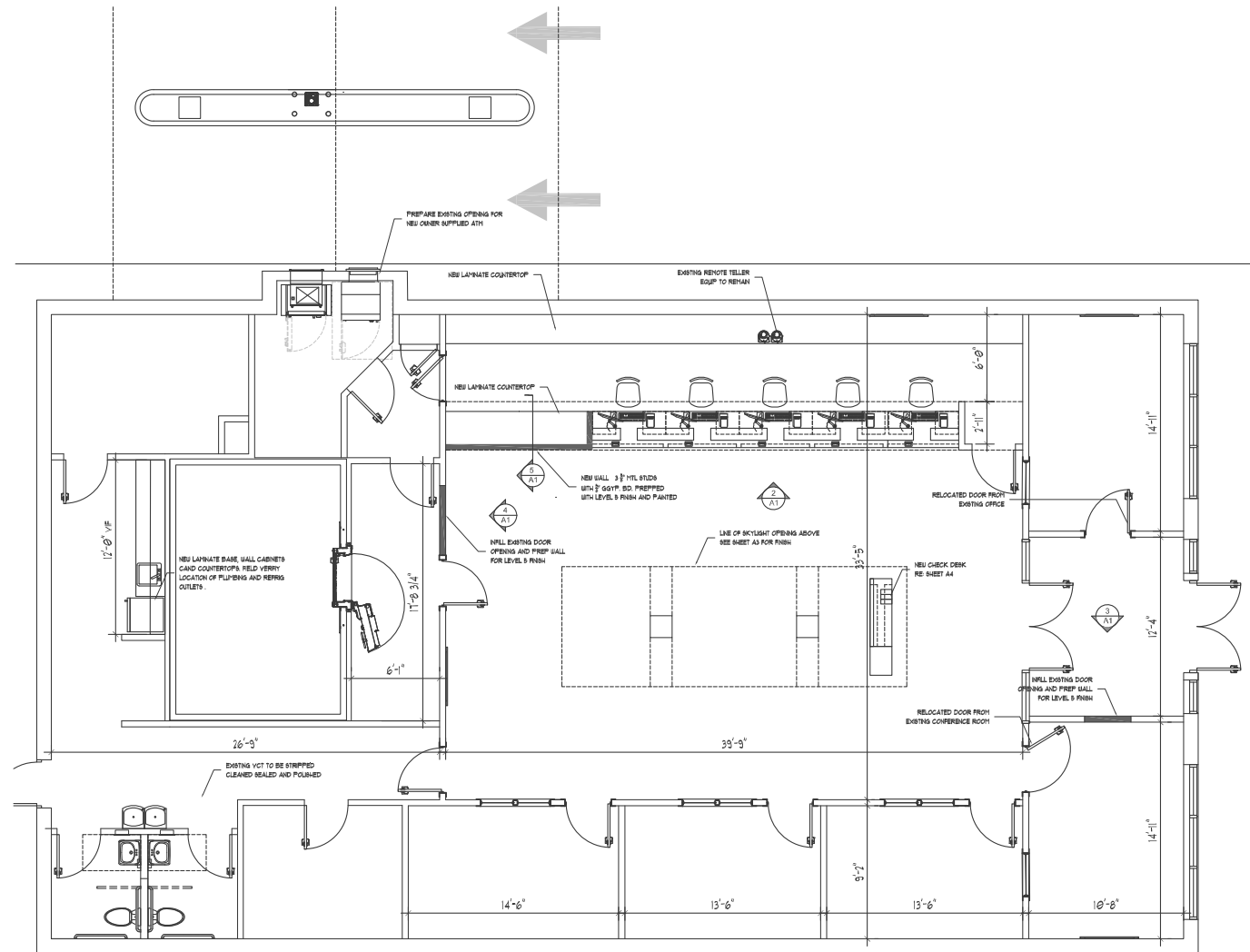


# FORMER BANK BRANCH

39 Home Depot Drive, Plymouth, Massachusetts



INTERIOR ELEVATION - TELLER LINE







## Former Bank Branch - 39 Home Depot Drive, Plymouth, Massachusetts



FOR MORE INFORMATION CONTACT:

**Vin Albanese**

781.849.9013 (Office) + 617.413.1193 (Cell)

valbanese@easternretail.com

P 781.849.9010 + F 781.849.9050 + [www.easternretail.com](http://www.easternretail.com) + 25 Braintree Hill Office Park, Suite 404 + Braintree, MA 02184

The information above has been obtained from sources believed reliable. While we do not doubt its accuracy, we have not verified it and make no guarantee, warranty or representation about it. It is your responsibility to independently confirm its accuracy and completeness. Any projections, opinions, assumptions or estimates used are for example only and do not represent the current or future performance of the property. The value of this transaction to you depends on tax and other factors, which should be evaluated by your tax and financial advisors. You and your advisors should conduct a careful, independent investigation of the property to determine to your satisfaction, the suitability of the property for your needs.