

# DEVELOPMENT OPPORTUNITY

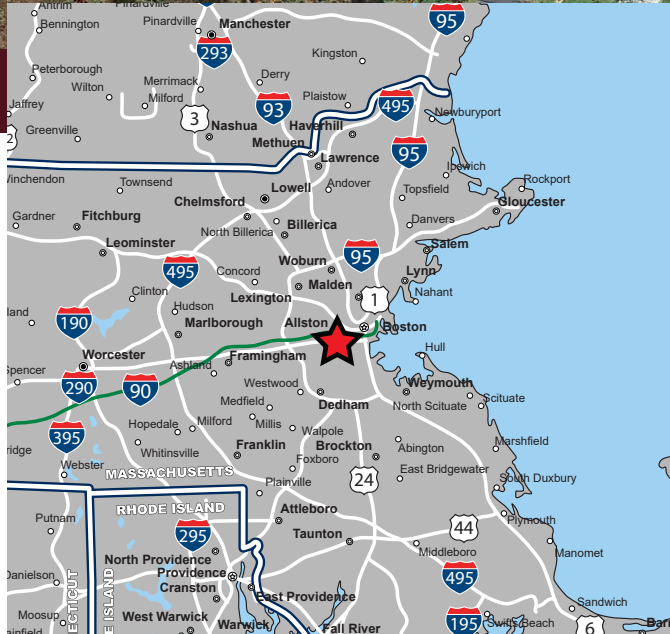
342 Bedford Street (Route 18), Whitman, Massachusetts



**AVAILABLE FOR SALE OR LEASE**

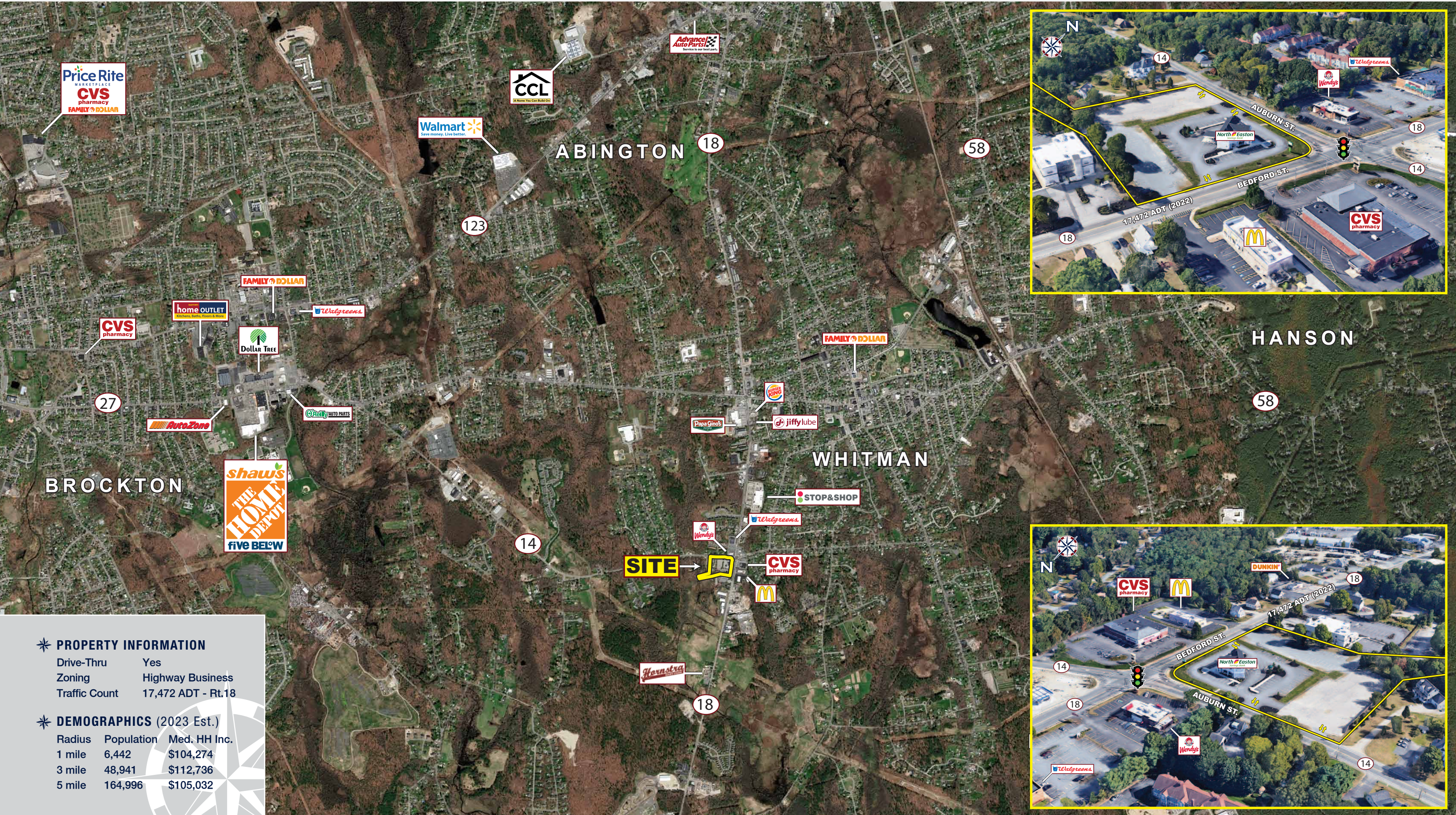
## PROPERTY HIGHLIGHTS

- » Ground Lease or Build-To-Suit Opportunity
- » Join North Easton Savings Bank
- » Zoned Business District
- » Multiple Uses Allowed
- » Various Layouts Available
- » Excellent Visibility & Access



# DEVELOPMENT OPPORTUNITY

342 Bedford Street (Route 18), Whitman, Massachusetts

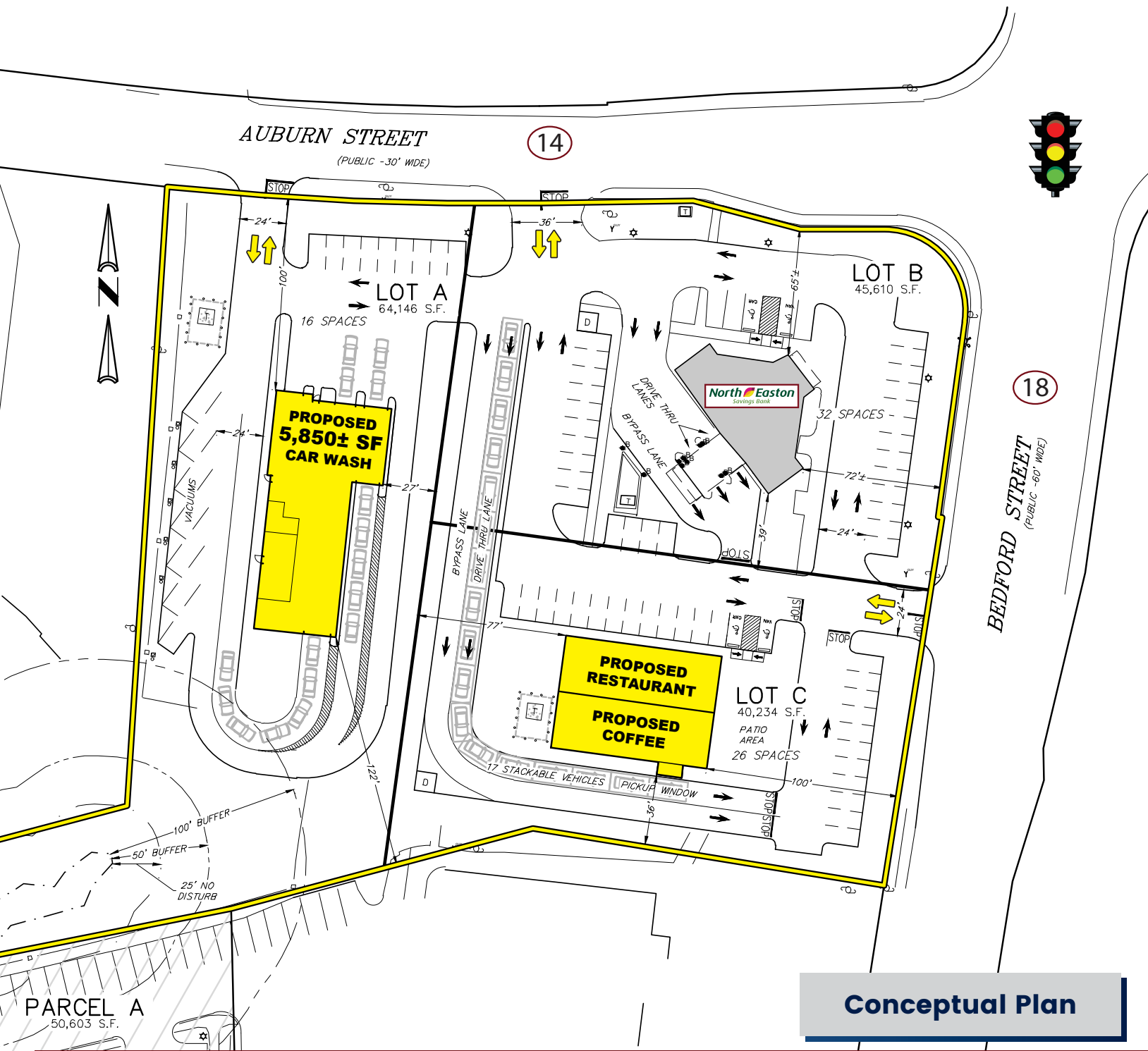


## PROPERTY INFORMATION

Drive-Thru Yes  
 Zoning Highway Business  
 Traffic Count 17,472 ADT - Rt.18

## DEMOGRAPHICS (2023 Est.)

Radius	Population	Med. HH Inc.
1 mile	6,442	\$104,274
3 mile	48,941	\$112,736
5 mile	164,996	\$105,032



**Conceptual Plan**

**Development Opportunity - 342 Bedford Street (Route 18), Whitman, MA**



FOR MORE INFORMATION CONTACT:

**Andrew Bonica**

781.849.9011

abonica@easternretail.com

**Tommy Landry**

781.849-9015

tlandry@easternretail.com

P 781.849.9010 + F 781.849.9050 + www.easternretail.com + 25 Braintree Hill Office Park, Suite 404 + Braintree, MA 02184

The information above has been obtained from sources believed reliable. While we do not doubt its accuracy, we have not verified it and make no guarantee, warranty or representation about it. It is your responsibility to independently confirm its accuracy and completeness. Any projections, opinions, assumptions or estimates used are for example only and do not represent the current or future performance of the property. The value of this transaction to you depends on tax and other factors, which should be evaluated by your tax and financial advisors. You and your advisors should conduct a careful, independent investigation of the property to determine to your satisfaction, the suitability of the property for your needs.