



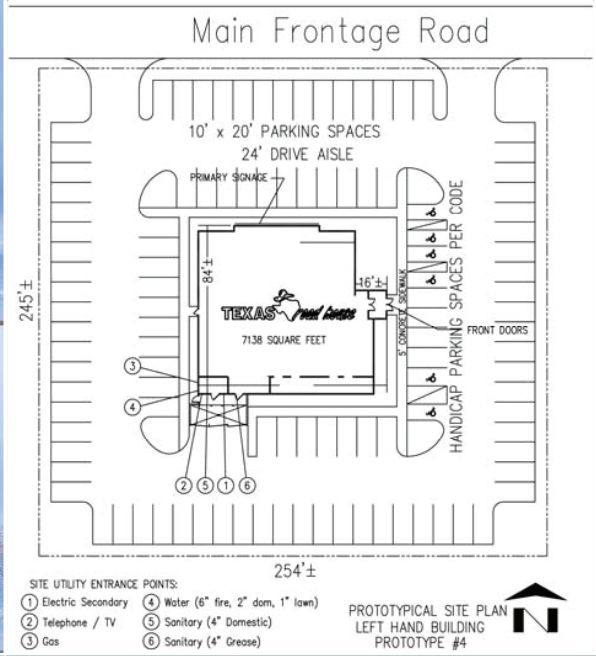
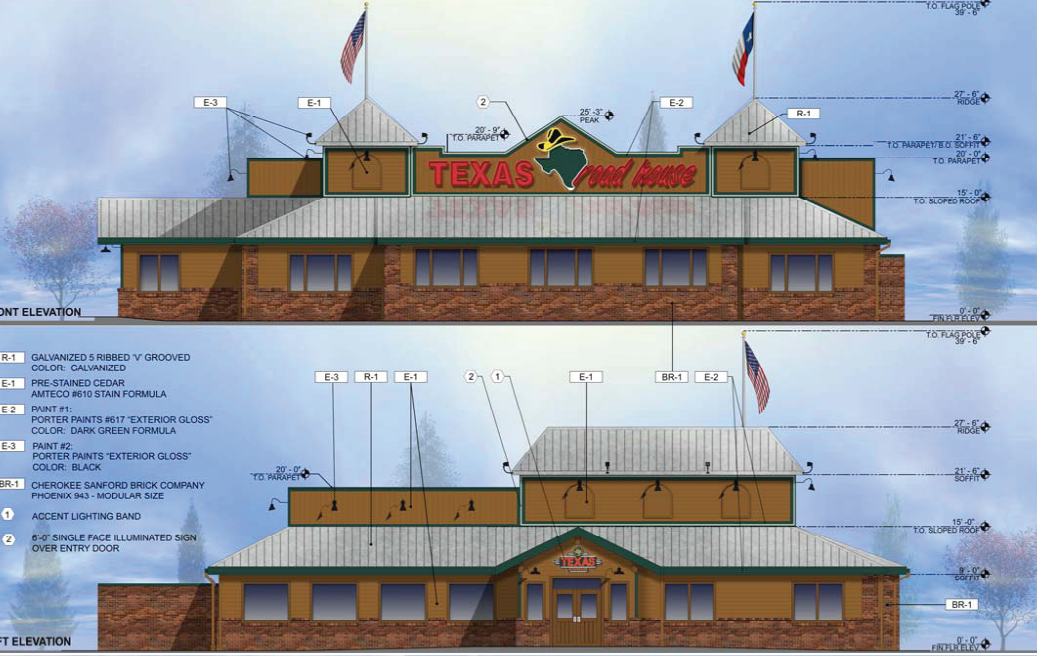
COMPANY PROFILE

- » Public company traded on NASDAQ Exchange under the ticker symbol TXRH.
- » A casual, high-volume concept first opened in 1993 and today operates over 460 restaurants in 49 states and 5 international locations.
- » Offering moderately priced assortment of specially-seasoned and aged steak, hand-cut daily in every restaurant and cooked to order over gas-fired grills.
- » Also offering a selection of ribs, chicken, fish, and vegetable plates and an assortment of hamburgers, salads, and sandwiches.
- » Fun, casual atmosphere.
- » Primarily dinner only during the week.
- » Lunch and dinner on weekends.

SITES WANTED ✦ NEW ENGLAND

P 781.849.9010 ✦ F 781.849.9050 ✦ www.easternretail.com
25 Braintree Hill Office Park, Suite 404 ✦ Braintree, MA 02184





TEXAS ROADHOUSE CRITERIA

- » Freestanding, Highly Visible Sites throughout New England
- » 1.5 - 2.0 Acres to Accommodate a 7,138 SF Restaurant
- » 180 Parking Spaces
- » Mid-Size Trade Areas
- » Average Income and Age

Andrew Bonica
 E: abonica@easternretail.com
 P: 781.849.9011

Tommy Landry
 E: tlandry@easternretail.com
 P: 781.849.9015



SITES WANTED ✦ NEW ENGLAND

P 781.849.9010 ✦ F 781.849.9050 ✦ www.easternretail.com
 25 Braintree Hill Office Park, Suite 404 ✦ Braintree, MA 02184

