



FORMER PETCO

790 Waverly Road, North Andover, Massachusetts

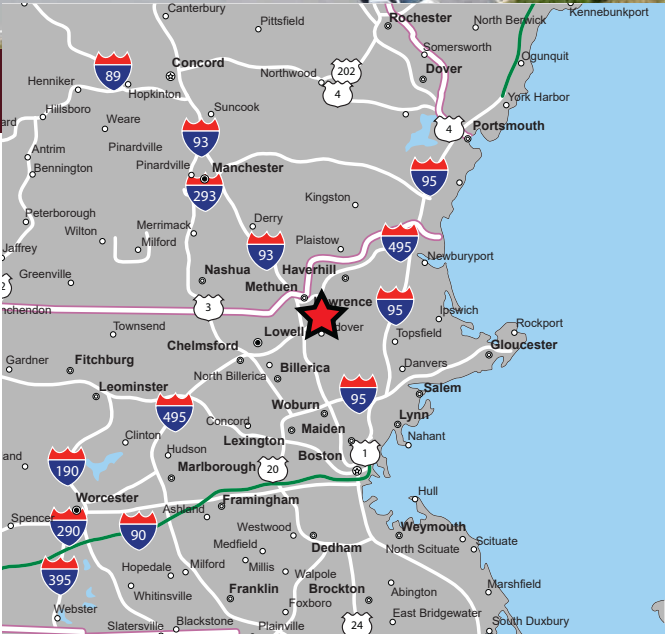


TURNPIKE ST.
28,138 ADT (2022)

SITE

Walgreens

WAVERLY RD.



AVAILABLE FOR LEASE

PROPERTY HIGHLIGHTS

- » 11,084 SF Available for Lease
- » High Profile Location at Intersection of Route 114 & Waverly Road
- » Large Parking Field
- » Excellent Visibility and Access
- » Densely Populated Trade Area with High Incomes
- » Pylon Signage Available
- » Multiple Uses Allowed



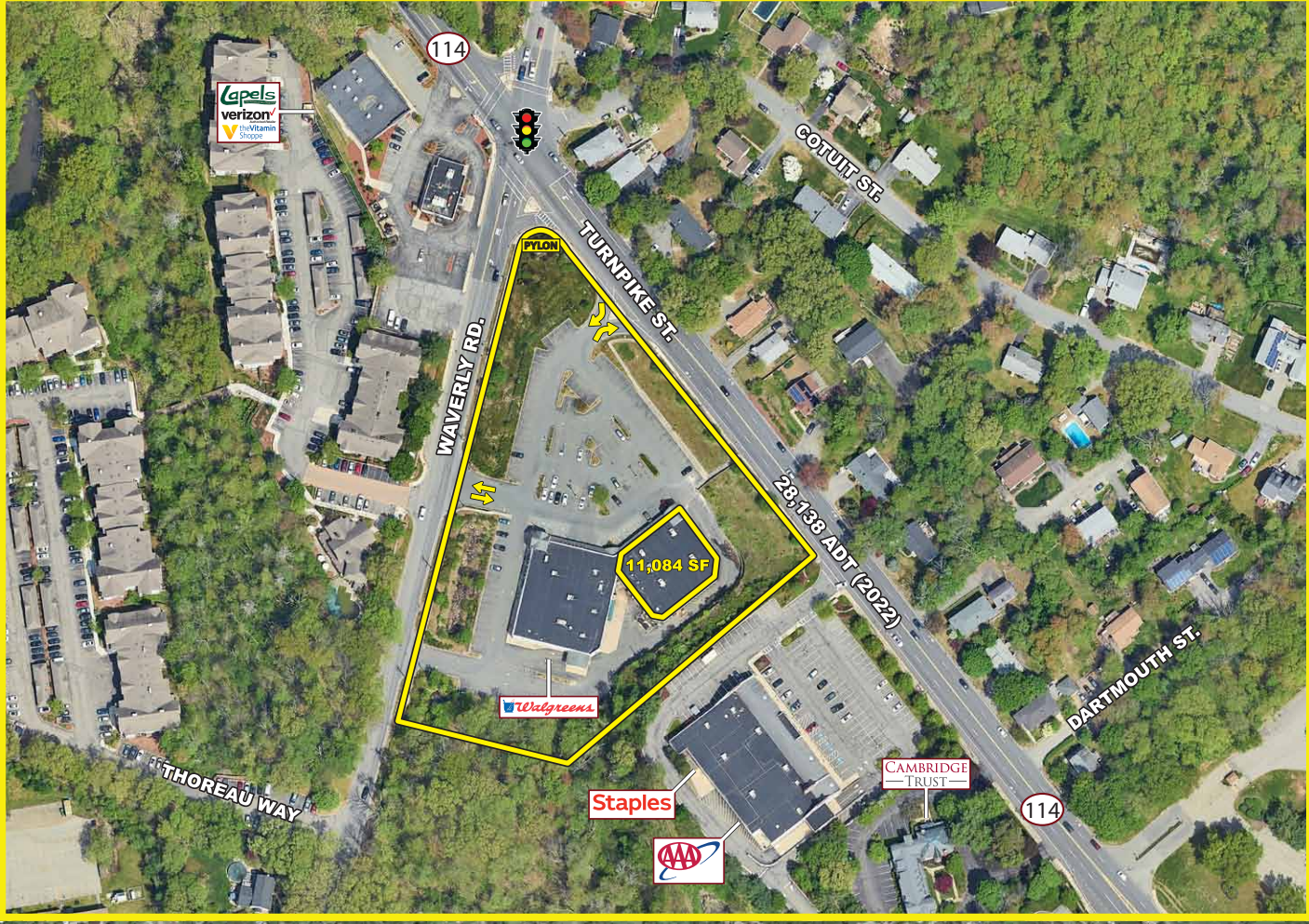
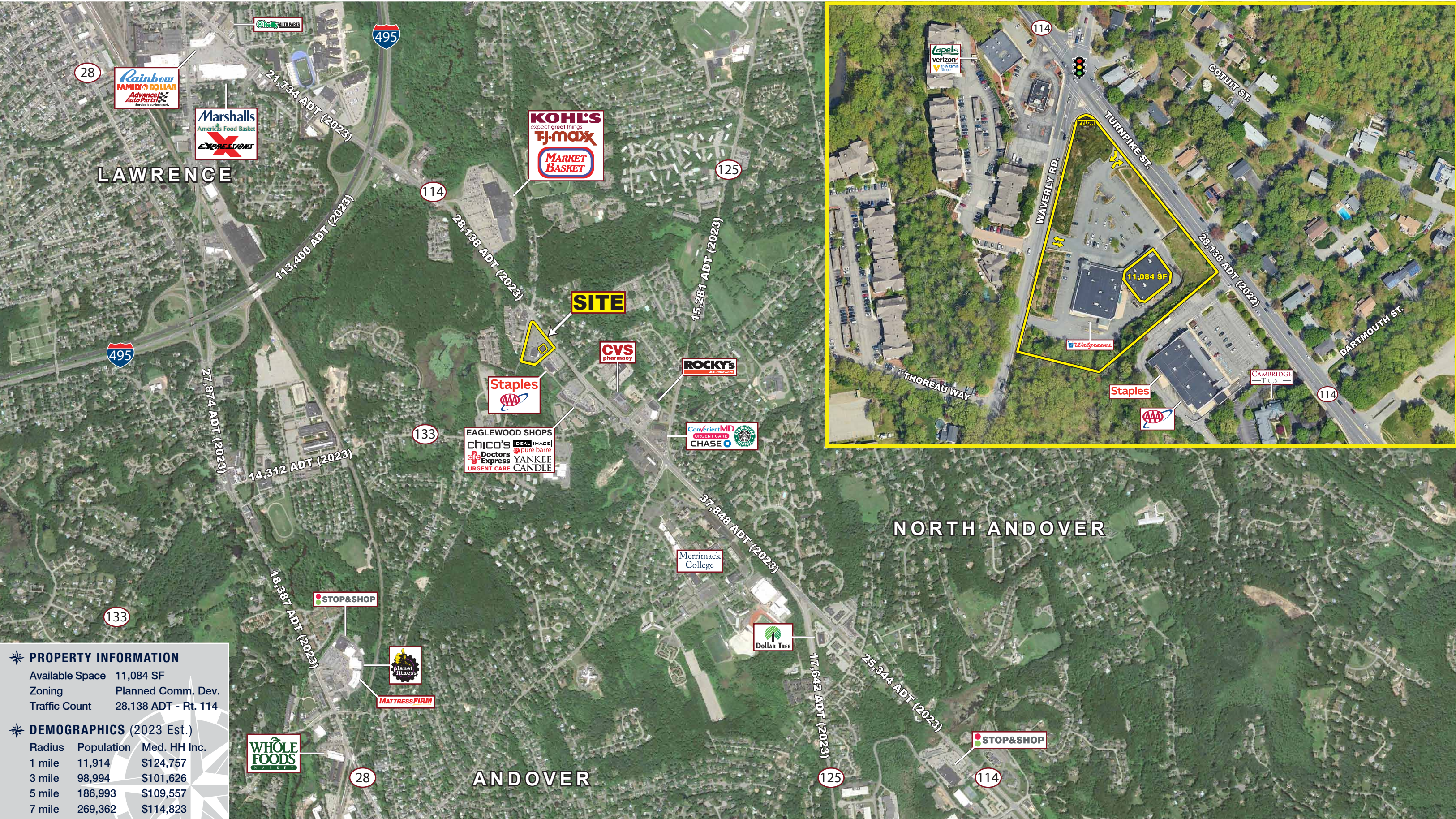
EASTERN
RETAIL PROPERTIES

FORMER PETCO

790 Waverly Road, North Andover, Massachusetts



EASTERN
RETAIL PROPERTIES



✦ **PROPERTY INFORMATION**

Available Space 11,084 SF
 Zoning Planned Comm. Dev.
 Traffic Count 28,138 ADT - Rt. 114

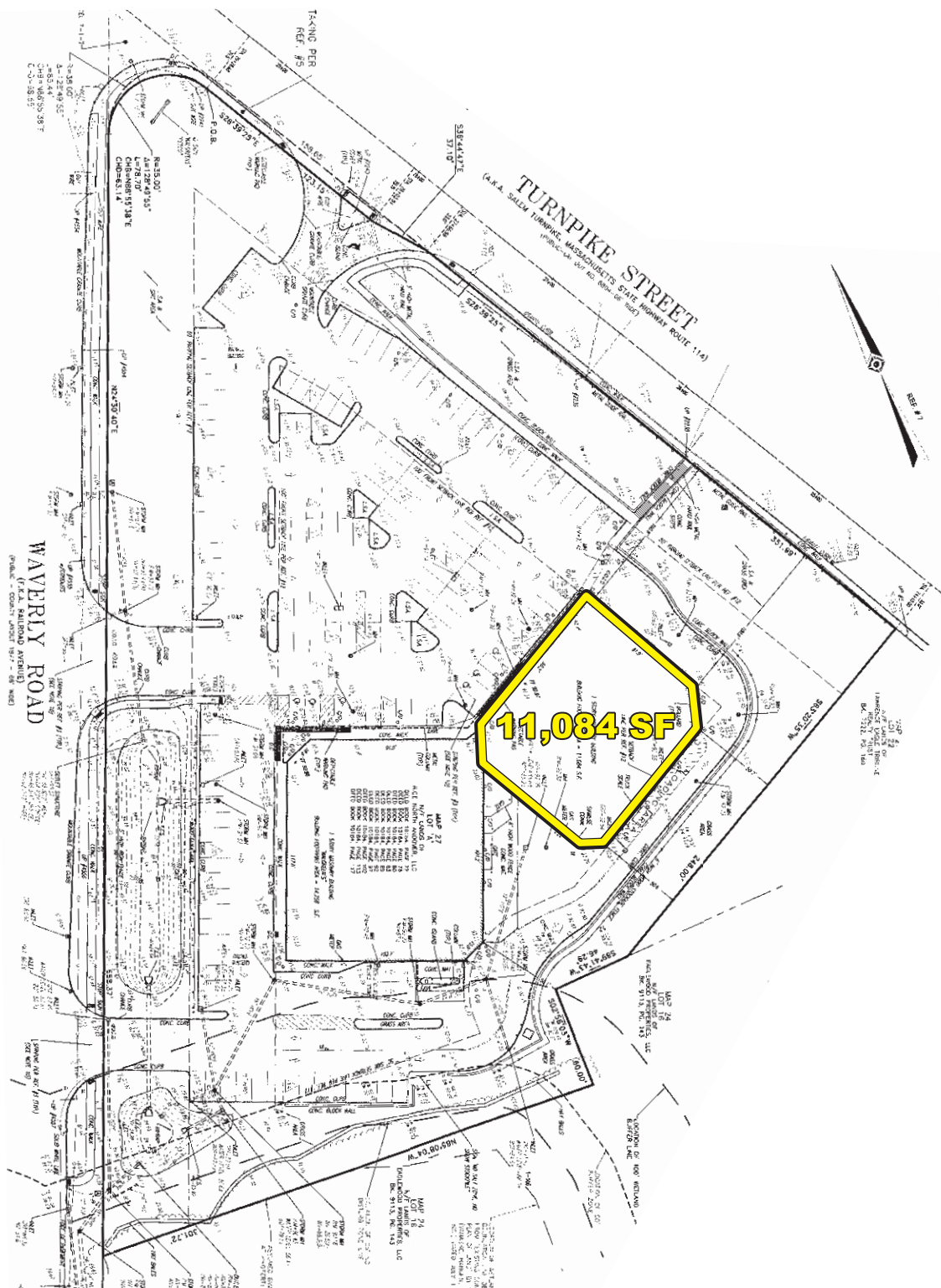
✦ **DEMOGRAPHICS (2023 Est.)**

Radius	Population	Med. HH Inc.
1 mile	11,914	\$124,757
3 mile	98,994	\$101,626
5 mile	186,993	\$109,557
7 mile	269,362	\$114,823

FORMER PETCO

790 Waverly Road, North Andover, Massachusetts





Former Petco - 790 Waverly Road, North Andover, Massachusetts



FOR MORE INFORMATION CONTACT:

Andrew Bonica

781.849.9011

abonica@easternretail.com

Sam Peterson

781.849.9016

speterson@easternretail.com

P 781.849.9010 + F 781.849.9050 + www.easternretail.com + 25 Braintree Hill Office Park, Suite 305 + Braintree, MA 02184

The information above has been obtained from sources believed reliable. While we do not doubt its accuracy, we have not verified it and make no guarantee, warranty or representation about it. It is your responsibility to independently confirm its accuracy and completeness. Any projections, opinions, assumptions or estimates used are for example only and do not represent the current or future performance of the property. The value of this transaction to you depends on tax and other factors, which should be evaluated by your tax and financial advisors. You and your advisors should conduct a careful, independent investigation of the property to determine to your satisfaction, the suitability of the property for your needs.