

# FORMER WALGREENS

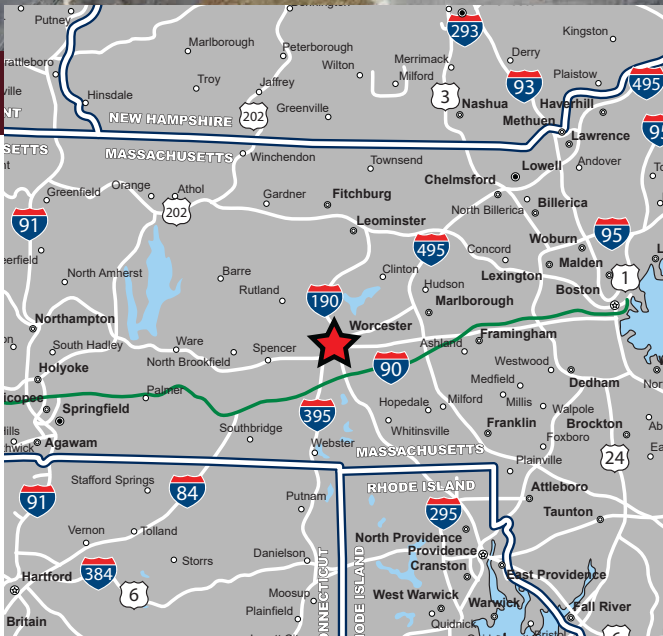
99 Stafford Street, Worcester, Massachusetts



**AVAILABLE FOR LEASE OR REDEVELOPMENT**

## PROPERTY HIGHLIGHTS

- » 14,853 SF Former Walgreens
- » Excellent Visibility & Access
- » Drive-Thru & Pylon Signage Available
- » 200' +/- Frontage on Stafford Street
- » Large Parking Field
- » Multiple Uses Allowed
- » Neighboring Retailers Include Shaw's, Dollar Tree, Marshalls, Planet Fitness, CVS, O'Reilly Auto Parts and more



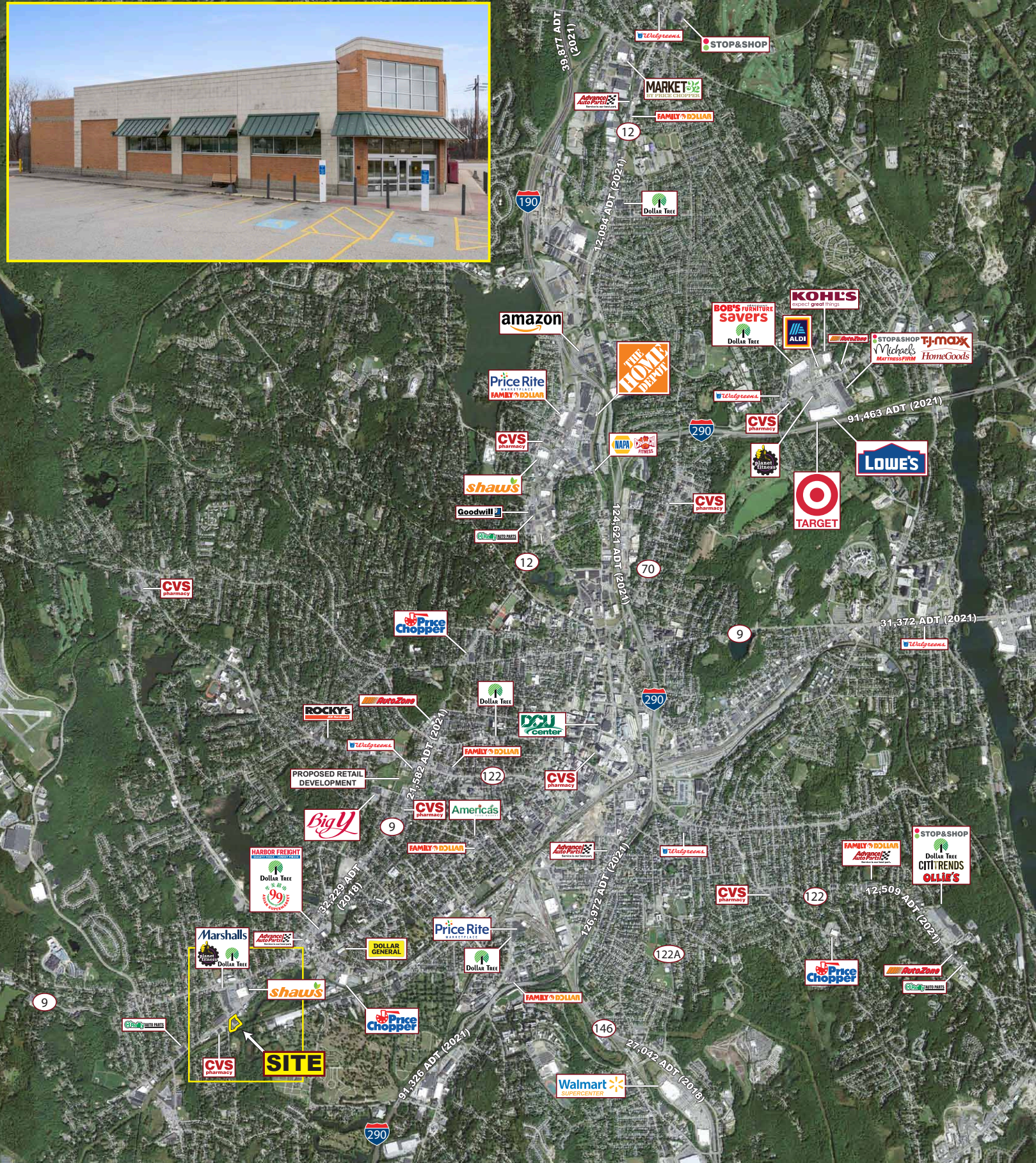


# FORMER WALGREENS

99 Stafford Street, Worcester, Massachusetts



**EASTERN**  
RETAIL PROPERTIES



**14,853 SF AVAILABLE**  
**AVAILABLE IMMEDIATELY**

✦ **PROPERTY INFORMATION**

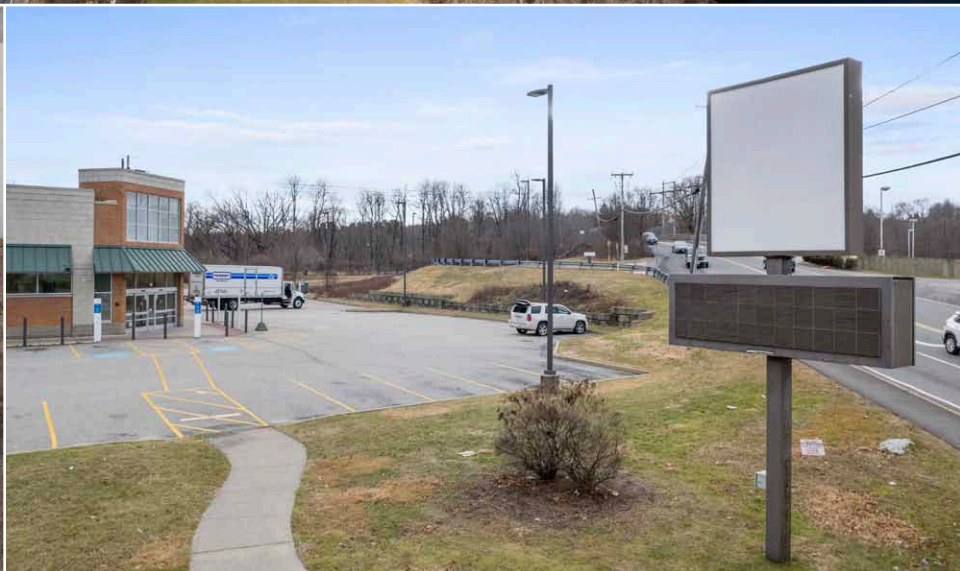
Available Space	14,853 SF
Drive Thru	Yes
Pylon Signage	Yes
Parking	77 Spaces
Traffic Count	12,194 ADT

✦ **DEMOGRAPHICS (2023)**

Radius	Population	Med. HH Inc.
1 mile	14,153	\$75,699
3 mile	117,478	\$71,641
5 mile	205,896	\$77,697
7 mile	284,355	\$85,683



N



## Former Walgreens - 99 Stafford Street, Worcester, Massachusetts



**EASTERN**  
RETAIL PROPERTIES

FOR MORE INFORMATION CONTACT:

**Andrew Bonica**

781.849.9011

abonica@easternretail.com

**Sam Peterson**

781.849.9016

speterson@easternretail.com

P 781.849.9010 + F 781.849.9050 + [www.easternretail.com](http://www.easternretail.com) + 25 Braintree Hill Office Park, Suite 404 + Braintree, MA 02184

The information above has been obtained from sources believed reliable. While we do not doubt its accuracy, we have not verified it and make no guarantee, warranty or representation about it. It is your responsibility to independently confirm its accuracy and completeness. Any projections, opinions, assumptions or estimates used are for example only and do not represent the current or future performance of the property. The value of this transaction to you depends on tax and other factors, which should be evaluated by your tax and financial advisors. You and your advisors should conduct a careful, independent investigation of the property to determine to your satisfaction, the suitability of the property for your needs.