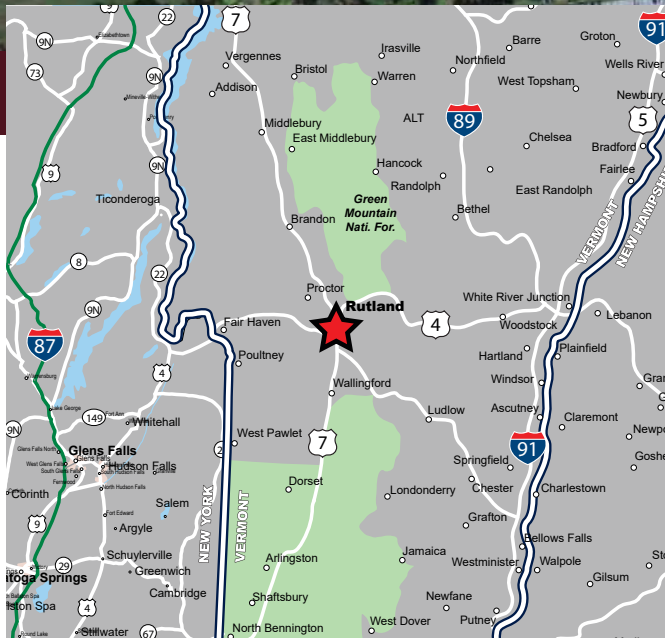


# GREEN MOUNTAIN PLAZA

286-324 Route 7, Rutland, Vermont



**AVAILABLE FOR LEASE**

## PROPERTY HIGHLIGHTS

- » 15,715 SF & 24,000 SF Available for Lease
- » High Profile Location on Rt. 7
- » Fully Signalized Access
- » Pylon Signage Available
- » Regional Trade Area
- » Large Parking Field
- » Multiple Uses Allowed

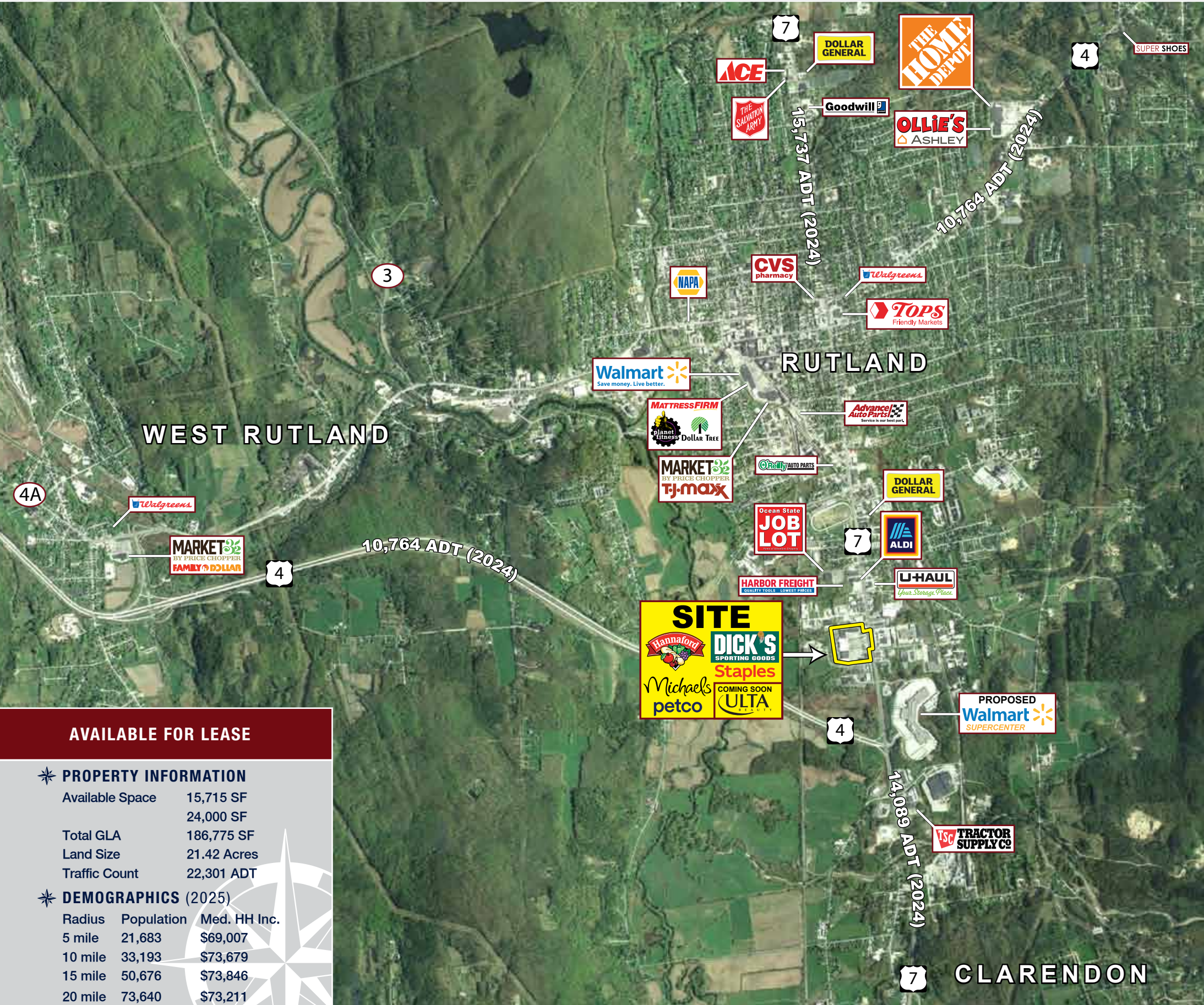


# GREEN MOUNTAIN PLAZA

286-324 Route 7, Rutland, Vermont



**EASTERN**  
RETAIL PROPERTIES



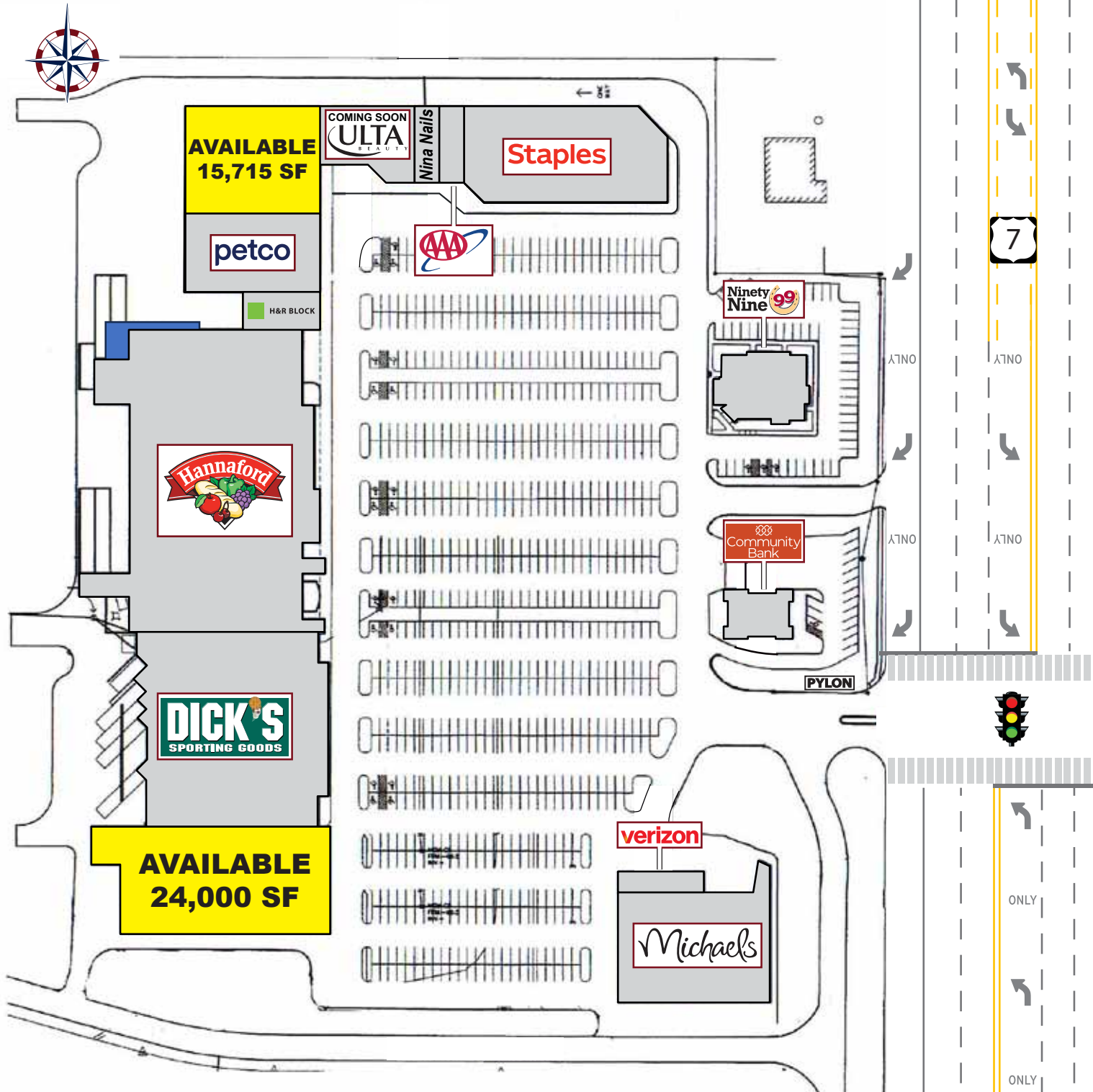
## AVAILABLE FOR LEASE

### PROPERTY INFORMATION

|                 |             |
|-----------------|-------------|
| Available Space | 15,715 SF   |
|                 | 24,000 SF   |
| Total GLA       | 186,775 SF  |
| Land Size       | 21.42 Acres |
| Traffic Count   | 22,301 ADT  |

### DEMOGRAPHICS (2025)

| Radius  | Population | Med. HH Inc. |
|---------|------------|--------------|
| 5 mile  | 21,683     | \$69,007     |
| 10 mile | 33,193     | \$73,679     |
| 15 mile | 50,676     | \$73,846     |
| 20 mile | 73,640     | \$73,211     |



**Green Mountain Plaza - 286-324 Route 7, Rutland, Vermont**



FOR MORE INFORMATION CONTACT:

**Mike Hotarek**

781.849.9017

mhotarek@easternretail.com

**Sam Peterson**

781.849.9016

speterson@easternretail.com

P 781.849.9010 + F 781.849.9050 + [www.easternretail.com](http://www.easternretail.com) + 25 Braintree Hill Office Park, Suite 404 + Braintree, MA 02184

The information above has been obtained from sources believed reliable. While we do not doubt its accuracy, we have not verified it and make no guarantee, warranty or representation about it. It is your responsibility to independently confirm its accuracy and completeness. Any projections, opinions, assumptions or estimates used are for example only and do not represent the current or future performance of the property. The value of this transaction to you depends on tax and other factors, which should be evaluated by your tax and financial advisors. You and your advisors should conduct a careful, independent investigation of the property to determine to your satisfaction, the suitability of the property for your needs.