



FORMER FRIENDLY'S

1405 Main Street (Route 32), Willimantic, Connecticut



MAIN ST. - 9,100 ADT (2021)

32

AVAILABLE FOR SALE OR LEASE

PROPERTY HIGHLIGHTS

- » 2,107 SF Available
- » 0.36 Acre Site
- » Pylon Signage Available
- » Excellent Visibility & Access
- » Pad to Stop & Shop
- » High Traffic Counts
- » Ample Parking

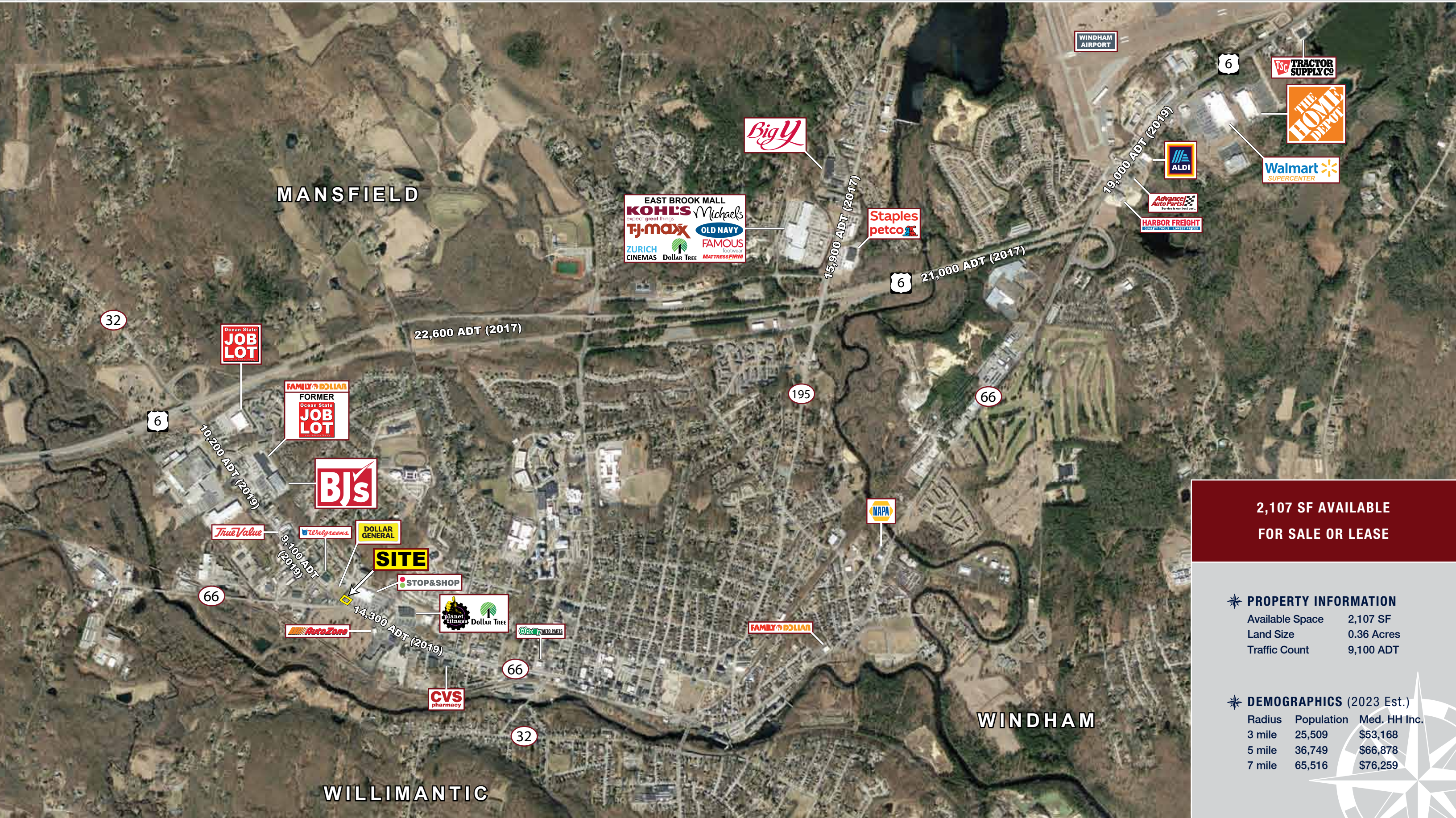


FORMER FRIENDLY'S

1405 Main Street (Route 32), Willimantic, Connecticut



EASTERN
RETAIL PROPERTIES

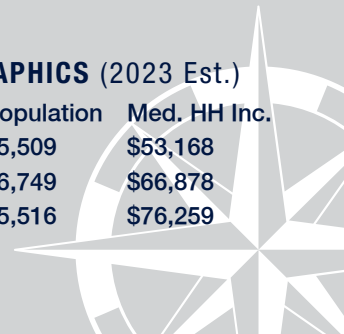


PROPERTY INFORMATION

Available Space	2,107 SF
Land Size	0.36 Acres
Traffic Count	9,100 ADT

DEMOGRAPHICS (2023 Est.)

Radius	Population	Med. HH Inc.
3 mile	25,509	\$53,168
5 mile	36,749	\$66,878
7 mile	65,516	\$76,259



FORMER FRIENDLY'S

1405 Main Street (Route 32), Willimantic, Connecticut

1405 Main St Windham, CT 06226	3 mi radius	5 mi radius	7 mi radius
Population			
2023 Estimated Population	25,509	36,749	65,516
2028 Projected Population	25,418	36,594	65,418
2020 Census Population	25,746	36,814	65,514
2010 Census Population	26,590	37,919	68,211
Projected Annual Growth 2023 to 2028	-	-	-
Historical Annual Growth 2010 to 2023	-0.3%	-0.2%	-0.3%
2023 Median Age	33.7	36.6	34.9
Households			
2023 Estimated Households	9,517	14,127	21,815
2028 Projected Households	9,524	14,074	21,674
2020 Census Households	9,480	13,964	21,535
2010 Census Households	9,334	13,759	20,713
Projected Annual Growth 2023 to 2028	-	-	-0.1%
Historical Annual Growth 2010 to 2023	0.2%	0.2%	0.4%
Race and Ethnicity			
2023 Estimated White	61.4%	68.8%	62.6%
2023 Estimated Black or African American	6.0%	4.9%	3.4%
2023 Estimated Asian or Pacific Islander	12.5%	9.6%	23.0%
2023 Estimated American Indian or Native Alaskan	1.1%	0.9%	0.5%
2023 Estimated Other Races	19.0%	15.7%	10.4%
2023 Estimated Hispanic	26.1%	21.1%	13.6%
Income			
2023 Estimated Average Household Income	\$76,132	\$90,989	\$107,063
2023 Estimated Median Household Income	\$53,168	\$66,878	\$76,259
2023 Estimated Per Capita Income	\$29,140	\$35,541	\$36,796
Education (Age 25+)			
2023 Estimated Elementary (Grade Level 0 to 8)	7.8%	6.2%	4.9%
2023 Estimated Some High School (Grade Level 9 to 11)	7.3%	5.9%	4.8%
2023 Estimated High School Graduate	30.5%	30.0%	29.2%
2023 Estimated Some College	18.7%	18.6%	17.4%
2023 Estimated Associates Degree Only	7.5%	8.1%	7.9%
2023 Estimated Bachelors Degree Only	14.4%	16.2%	18.1%
2023 Estimated Graduate Degree	13.9%	15.0%	17.6%
Business			
2023 Estimated Total Businesses	991	1,428	2,124
2023 Estimated Total Employees	9,795	12,883	21,662
2023 Estimated Employee Population per Business	9.9	9.0	10.2
2023 Estimated Residential Population per Business	25.7	25.7	30.8

©2023, Sites USA, Chandler, Arizona, 480-491-1112 Demographic Source: Applied Geographic Solutions 4/2023, TIGER Geography - RS1

This report was produced using data from private and government sources deemed to be reliable. The information herein is provided without representation or warranty.



Former Friendly's - 1405 Main Street (Route 32), Willimantic, Connecticut



FOR MORE INFORMATION CONTACT:

Andrew Bonica

781.849.9011

abonica@easternretail.com

Tommy Landry

781.849.9015

tlandry@easternretail.com

P 781.849.9010 + F 781.849.9050 + www.easternretail.com + 25 Braintree Hill Office Park, Suite 305 + Braintree, MA 02184

The information above has been obtained from sources believed reliable. While we do not doubt its accuracy, we have not verified it and make no guarantee, warranty or representation about it. It is your responsibility to independently confirm its accuracy and completeness. Any projections, opinions, assumptions or estimates used are for example only and do not represent the current or future performance of the property. The value of this transaction to you depends on tax and other factors, which should be evaluated by your tax and financial advisors. You and your advisors should conduct a careful, independent investigation of the property to determine to your satisfaction, the suitability of the property for your needs.