

HANNAFORD PLAZA

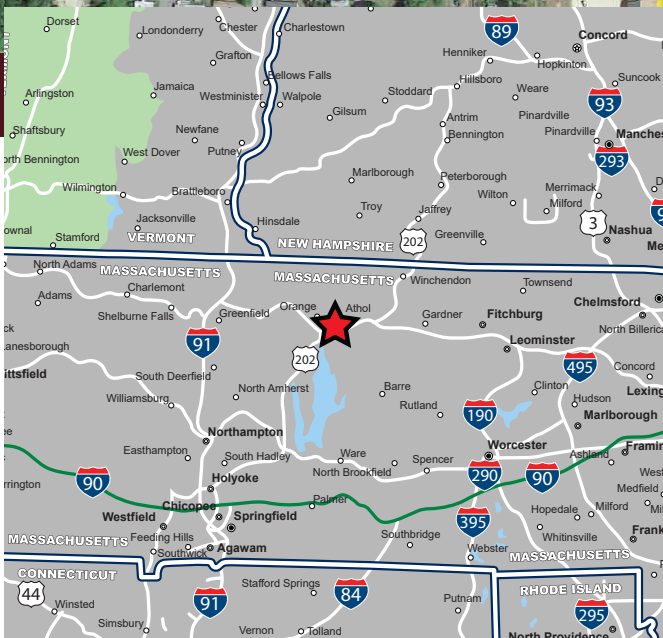
1560 South Main Street (Route 2A), Athol, Massachusetts



AVAILABLE FOR LEASE

PROPERTY HIGHLIGHTS

- » Up to 16,240 SF Available
- » Space can be Demised at 4,020 SF
- » Anchored by High Volume Hannaford
- » Pylon Signage Available
- » Abundant Parking
- » Multiple Curb Cuts
- » Strong Lineup of National and Local Tenants

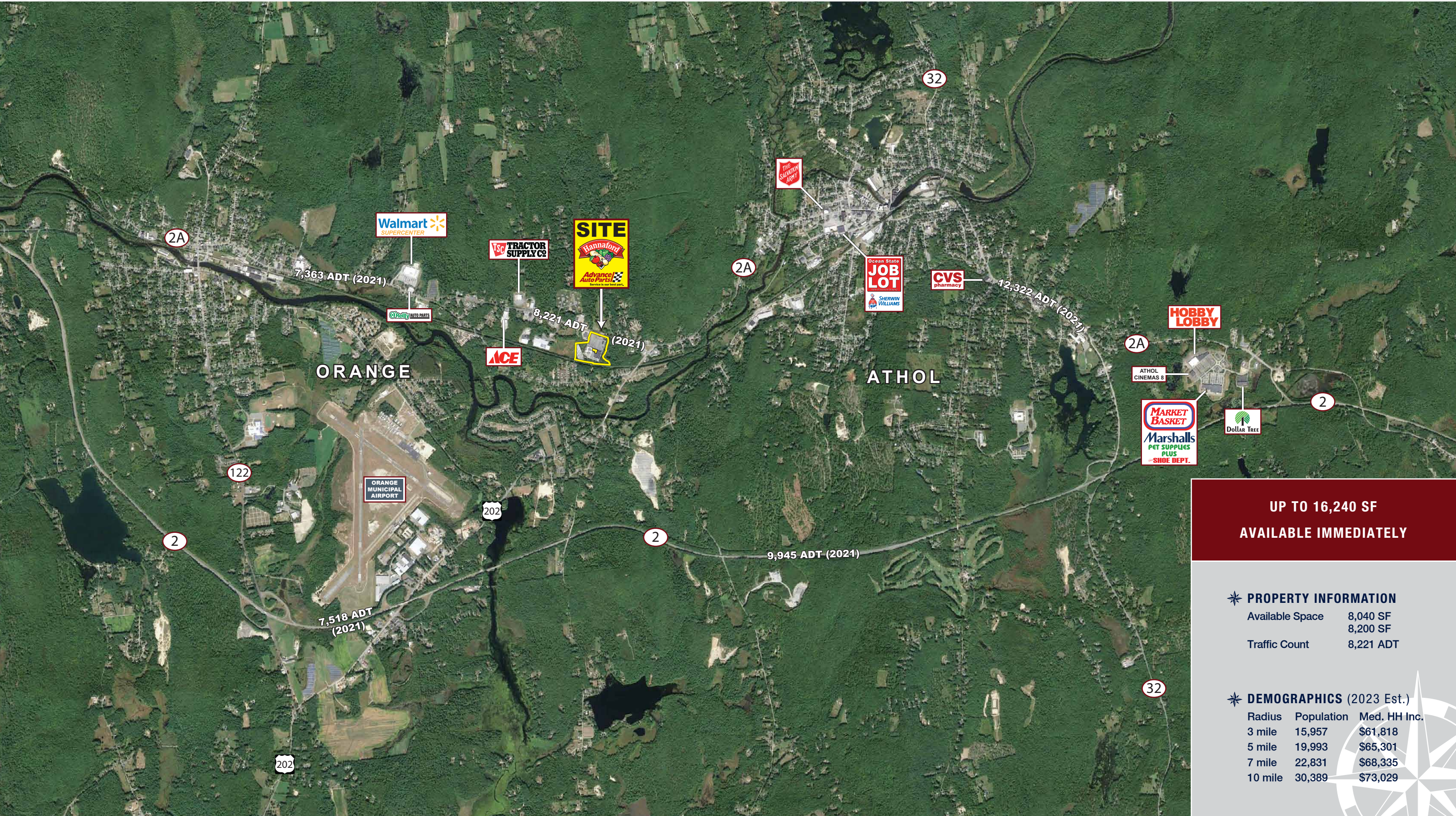


HANNAFORD PLAZA

1560 South Main Street (Route 2A), Athol, Massachusetts



EASTERN
RETAIL PROPERTIES



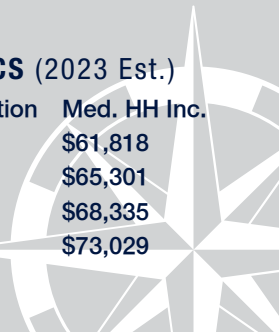
**UP TO 16,240 SF
AVAILABLE IMMEDIATELY**

PROPERTY INFORMATION

Available Space	8,040 SF
	8,200 SF
Traffic Count	8,221 ADT

DEMOGRAPHICS (2023 Est.)

Radius	Population	Med. HH Inc.
3 mile	15,957	\$61,818
5 mile	19,993	\$65,301
7 mile	22,831	\$68,335
10 mile	30,389	\$73,029



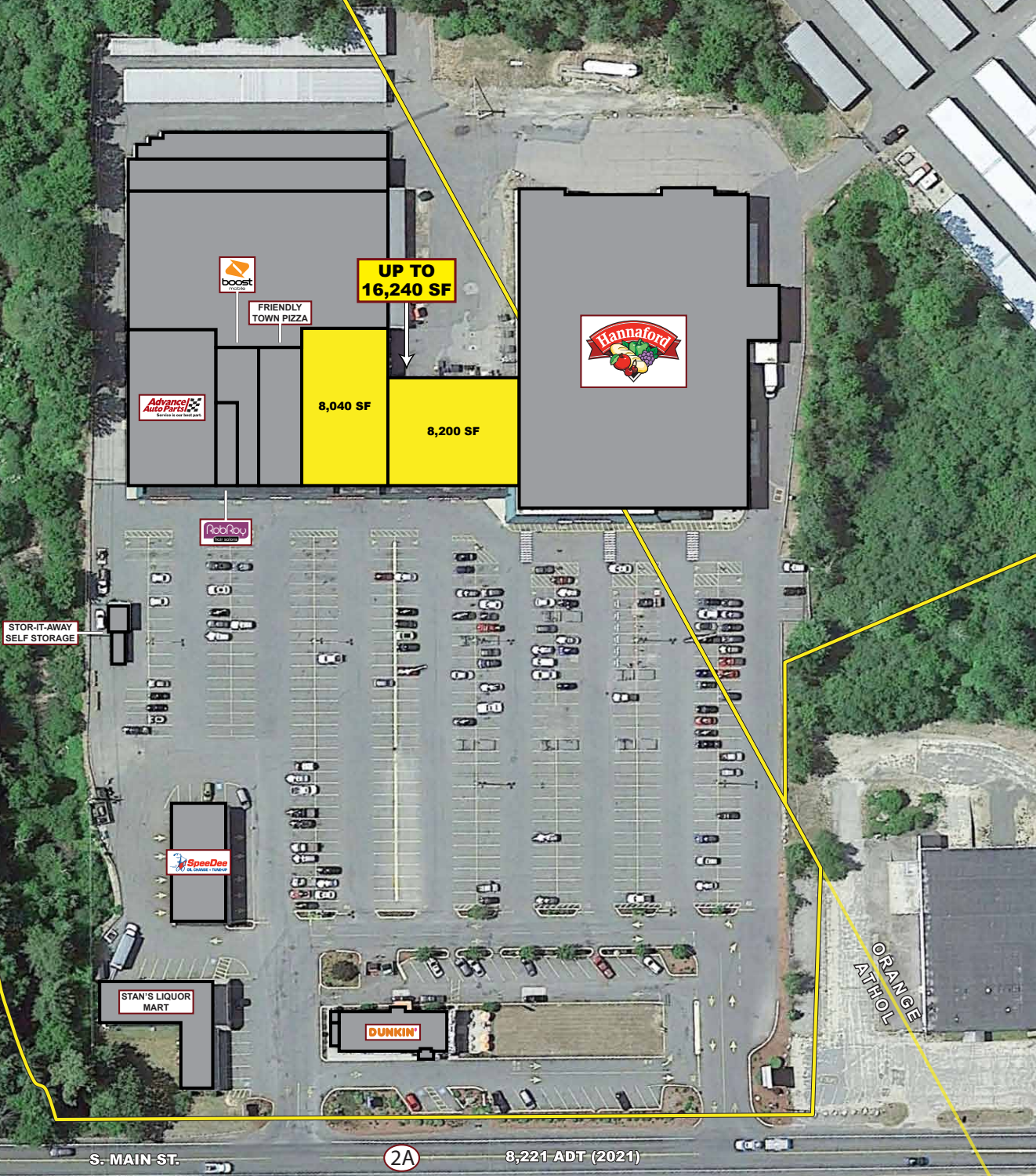
HANNAFORD PLAZA

1560 South Main Street (Route 2A), Athol, Massachusetts



EASTERN
RETAIL PROPERTIES





S. MAIN ST.



8,221 ADT (2021)

ORANGE
ATHOL

Hannaford Plaza - 1560 South Main Street (Route 2A), Athol, Massachusetts



EASTERN
RETAIL PROPERTIES

FOR MORE INFORMATION CONTACT:

Sam Peterson

781.849.9016

speterson@easternretail.com

Tommy Landry

781.849.9015

tlandry@easternretail.com

P 781.849.9010 + F 781.849.9050 + www.easternretail.com + 25 Braintree Hill Office Park, Suite 404 + Braintree, MA 02184

The information above has been obtained from sources believed reliable. While we do not doubt its accuracy, we have not verified it and make no guarantee, warranty or representation about it. It is your responsibility to independently confirm its accuracy and completeness. Any projections, opinions, assumptions or estimates used are for example only and do not represent the current or future performance of the property. The value of this transaction to you depends on tax and other factors, which should be evaluated by your tax and financial advisors. You and your advisors should conduct a careful, independent investigation of the property to determine to your satisfaction, the suitability of the property for your needs.