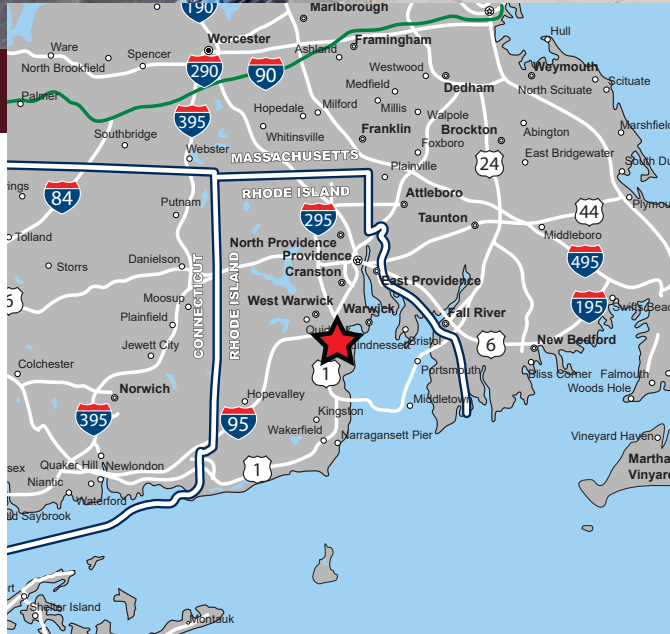




KINGSTOWN PLAZA

6653 Post Road (Route 1), North Kingstown, Rhode Island



AVAILABLE FOR LEASE

PROPERTY HIGHLIGHTS

- » 1,000 SF Available
- » Multiple Uses Allowed
- » Fully Signalized Access
- » Large Parking Field
- » Excellent Visibility
- » Strong Co-Tenancy with Tractor Supply, T.J.Maxx and Dollar Tree
- » Pylon Signage Available



EASTERN
RETAIL PROPERTIES

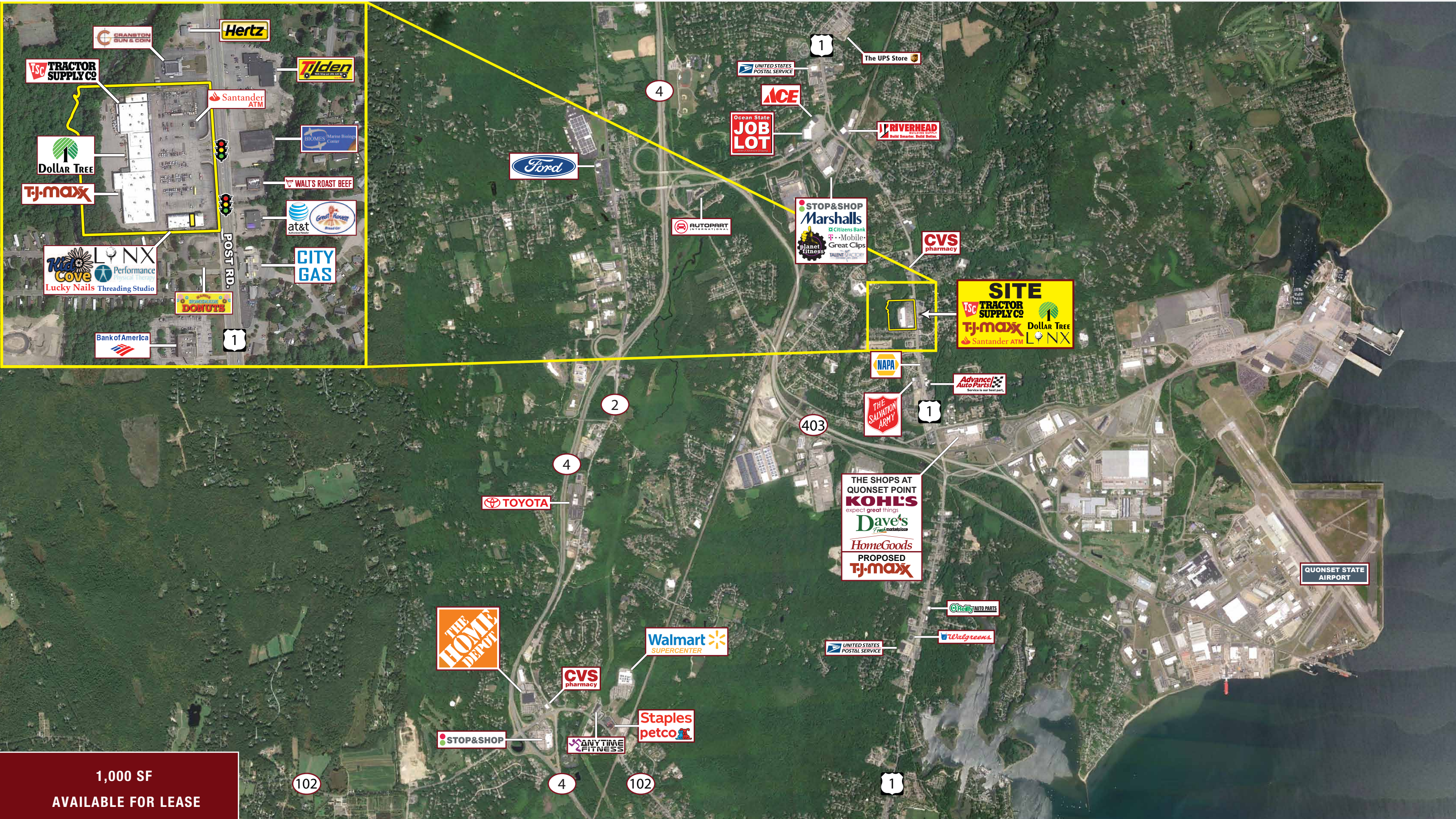


KINGSTOWN PLAZA

6653 Post Road (Route 1), North Kingstown, Rhode Island



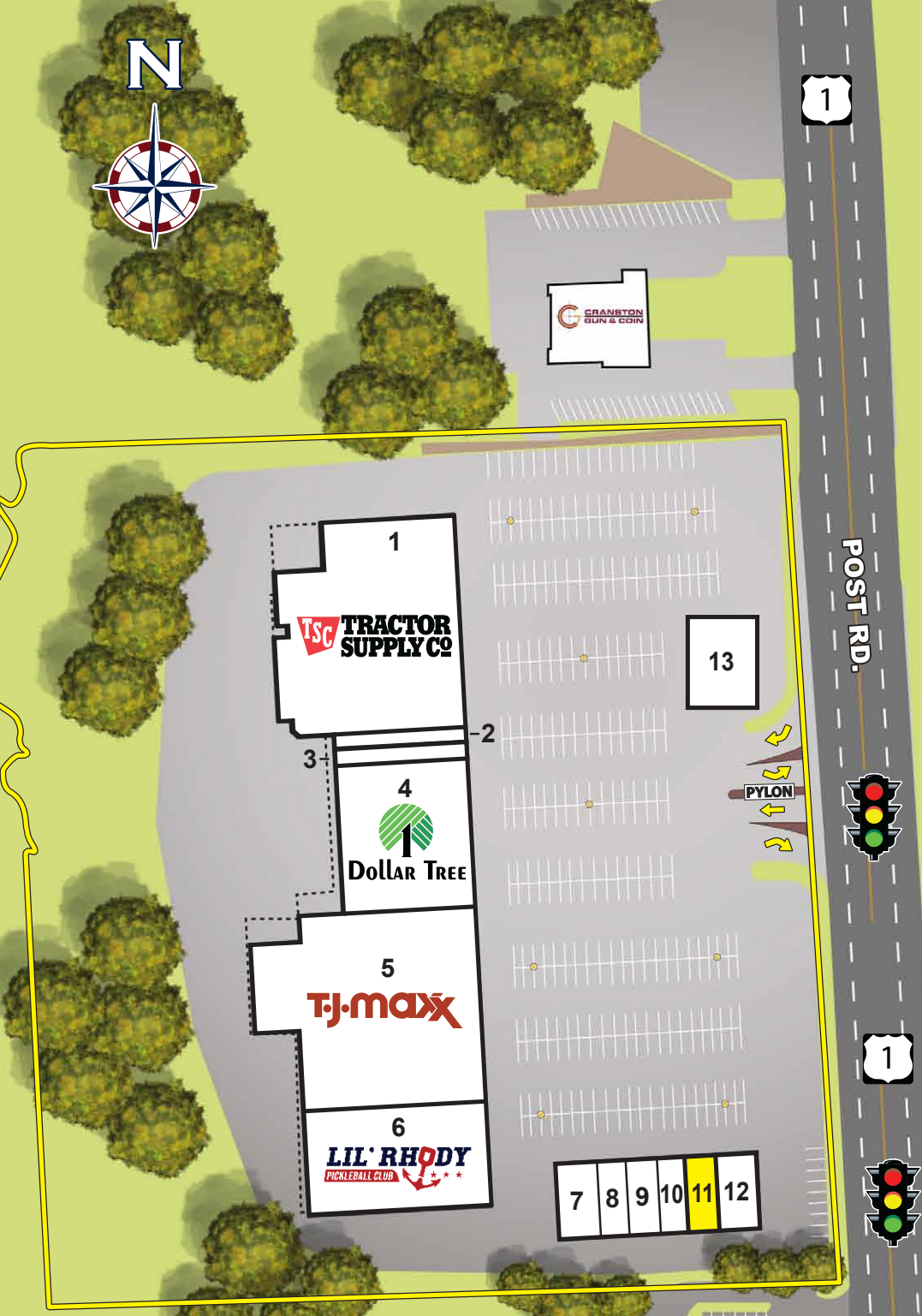
EASTERN
RETAIL PROPERTIES



SITE
TSC TRACTOR SUPPLY CO.
Dollar Tree
TJ-MAXX
Santander ATM
LONX

1,000 SF
AVAILABLE FOR LEASE

Kingstown Plaza		
1	Tractor Supply	26,414 SF
2	A's Aquatics & Pet Store	2,613 SF
3	Karate Studio	2,613 SF
4	Dollar Tree	10,246 SF
5	T.J.Maxx	25,677 SF
6	Lil' Rhody Pickleball Club	11,111 SF
7	Linx Golf	2,000 SF
8	Kid Cove Tutoring	1,000 SF
9	Lucky Nails	1,000 SF
10	Threading Spot	1,065 SF
11	AVAILABLE	1,000 SF
12	Ortho Core PT	2,200 SF
13	Sovereign Bank ATM	501 SF



DEMOGRAPHICS (2023)

Radius	Population	Med. HH Inc.
3 mile	22,067	\$112,607
5 mile	47,618	\$125,270
7 mile	111,289	\$105,689

Kingstown Plaza - 6653 Post Road (Route 1), North Kingstown, Rhode Island



EASTERN
RETAIL PROPERTIES



FOR MORE INFORMATION CONTACT:

Andrew Bonica

781.849.9011

abonica@easternretail.com

Tommy Landry

781.849.9015

tlandry@easternretail.com

P 781.849.9010 + F 781.849.9050 + www.easternretail.com + 25 Braintree Hill Office Park, Suite 404 + Braintree, MA 02184

The information above has been obtained from sources believed reliable. While we do not doubt its accuracy, we have not verified it and make no guarantee, warranty or representation about it. It is your responsibility to independently confirm its accuracy and completeness. Any projections, opinions, assumptions or estimates used are for example only and do not represent the current or future performance of the property. The value of this transaction to you depends on tax and other factors, which should be evaluated by your tax and financial advisors. You and your advisors should conduct a careful, independent investigation of the property to determine to your satisfaction, the suitability of the property for your needs.