

# WEYMOUTH CROSSING

505 Pond Street - Weymouth, Massachusetts

RECENTLY APPROVED - JOIN STARBUCKS AND CHIPOTLE



AVAILABLE FOR LEASE

## PROPERTY HIGHLIGHTS

- » New Ground Up Construction
- » Directly Outside of 6,000 Unit Union Point Project Being Developed by New England Development
- » 4,160 SF Available (62' x 66') Subdividable
- » Join Starbucks and Chipotle
- » Multiple Uses Allowed
- » High Profile Intersection
- » Excellent Visibility & Access
- » Over 29,000 VPD on Route 18
- » Pylon Signage Available





# WEYMOUTH CROSSING


505 Pond Street - Weymouth, Massachusetts



**EASTERN**  
RETAIL PROPERTIES




AVAILABLE FOR LEASE



## PROPERTY INFORMATION

Available Space	4,160 SF
Zoning	B1-Limited Business
Parking	83 Spaces
Traffic Count	29,662 ADT - Rt. 18



## DEMOGRAPHICS (2024)

Radius	Population	Med. HH Inc.
1 mile	6,083	\$115,296
3 mile	53,973	\$110,820
5 mile	178,788	\$113,761



# WEYMOUTH CROSSING

505 Pond Street - Weymouth, Massachusetts





# WEYMOUTH CROSSING

505 Pond Street - Weymouth, Massachusetts



**EASTERN**  
RETAIL PROPERTIES





# WEYMOUTH CROSSING

505 Pond Street - Weymouth, Massachusetts



**EASTERN**  
RETAIL PROPERTIES





# WEYMOUTH CROSSING

505 Pond Street - Weymouth, Massachusetts



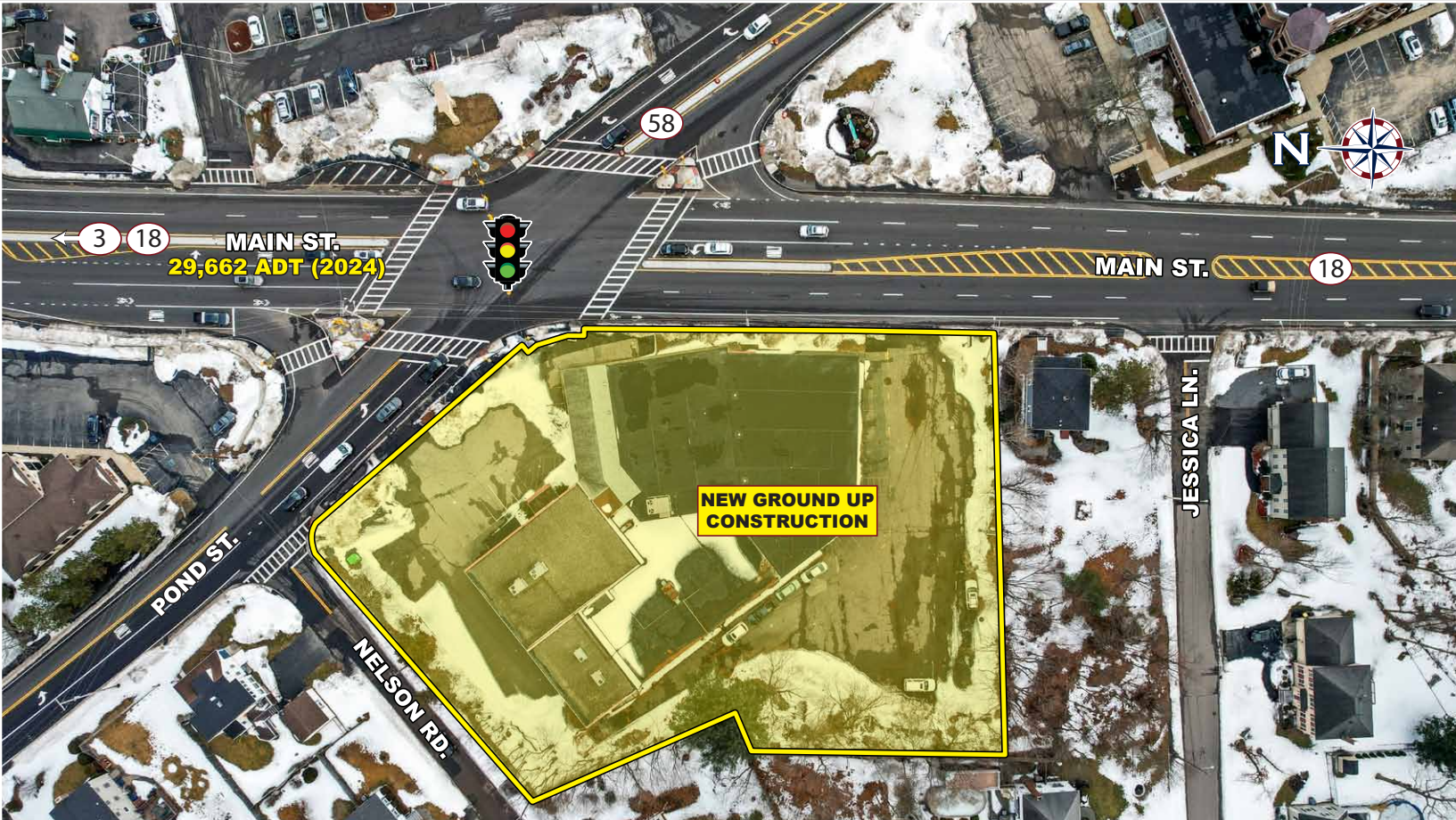
**EASTERN**  
RETAIL PROPERTIES



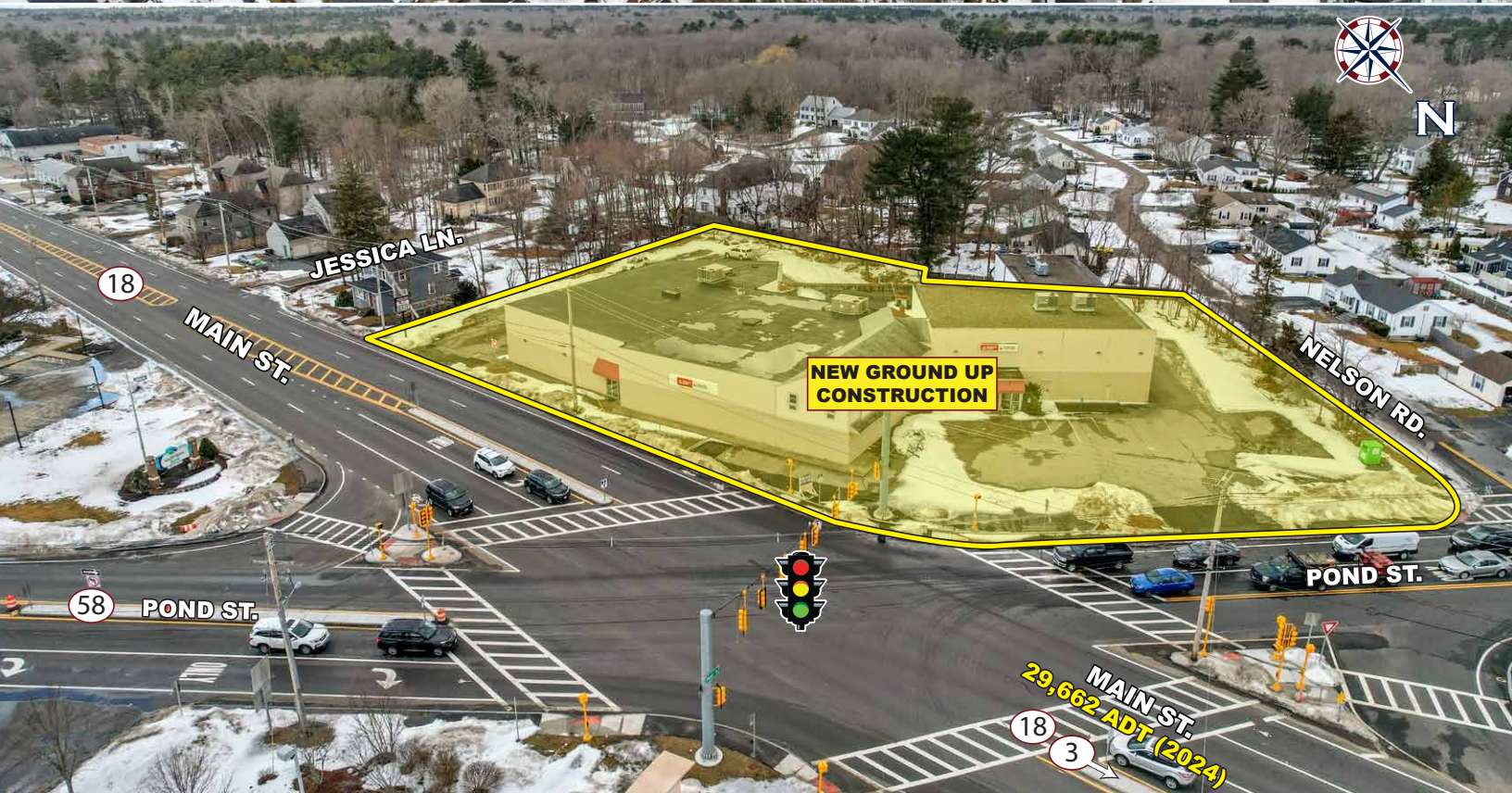
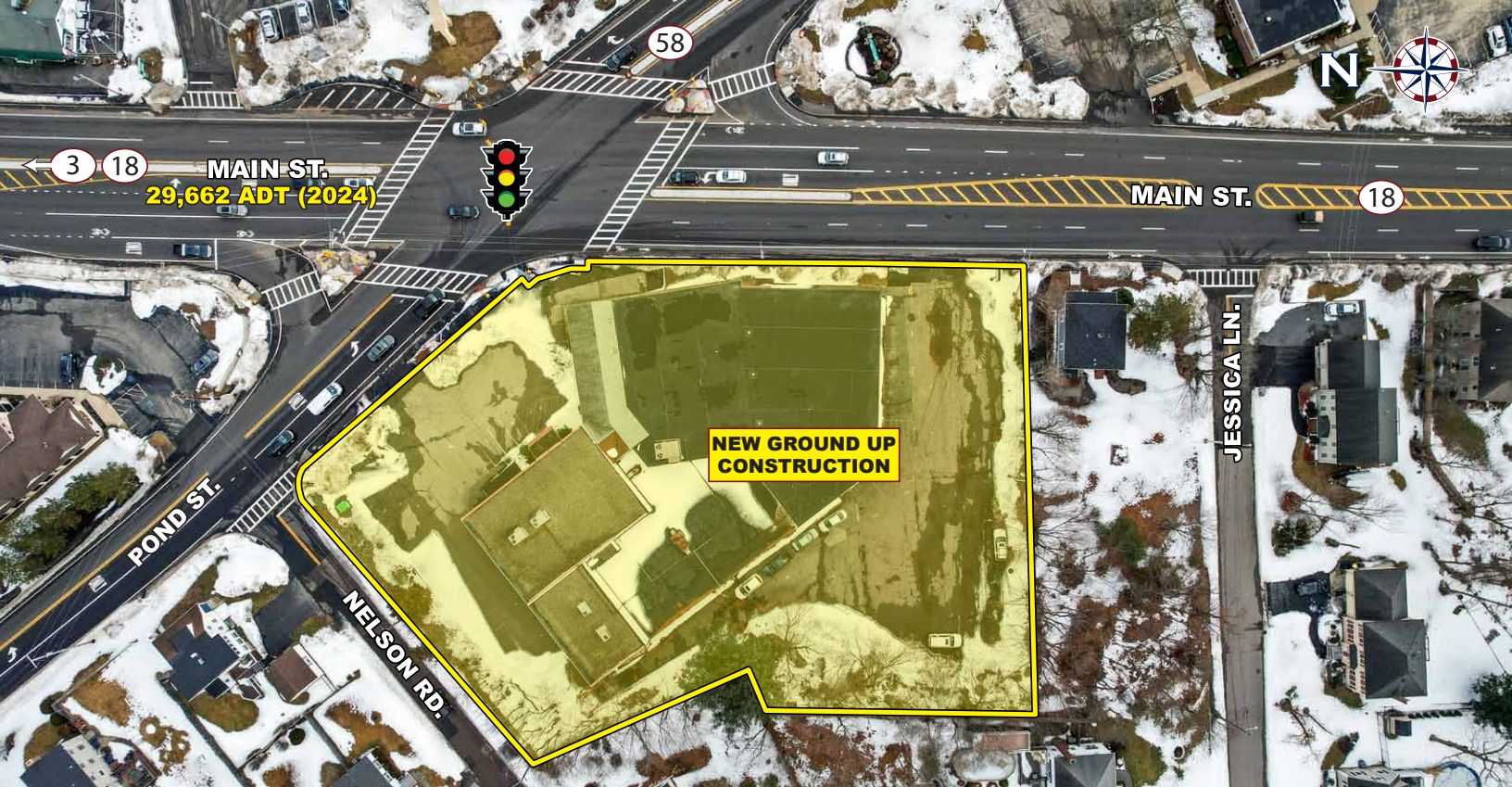


# WEYMOUTH CROSSING

505 Pond Street - Weymouth, Massachusetts







## Weymouth Crossing - 505 Pond Street - Weymouth, Massachusetts



**EASTERN**  
RETAIL PROPERTIES

FOR MORE INFORMATION CONTACT:

**Andrew Bonica**

781.849.9011

abonica@easternretail.com

**Sam Peterson**

781.849.9016

speterson@easternretail.com

P 781.849.9010 + F 781.849.9050 + [www.easternretail.com](http://www.easternretail.com) + 25 Braintree Hill Office Park, Suite 404 + Braintree, MA 02184

The information above has been obtained from sources believed reliable. While we do not doubt its accuracy, we have not verified it and make no guarantee, warranty or representation about it. It is your responsibility to independently confirm its accuracy and completeness. Any projections, opinions, assumptions or estimates used are for example only and do not represent the current or future performance of the property. The value of this transaction to you depends on tax and other factors, which should be evaluated by your tax and financial advisors. You and your advisors should conduct a careful, independent investigation of the property to determine to your satisfaction, the suitability of the property for your needs.