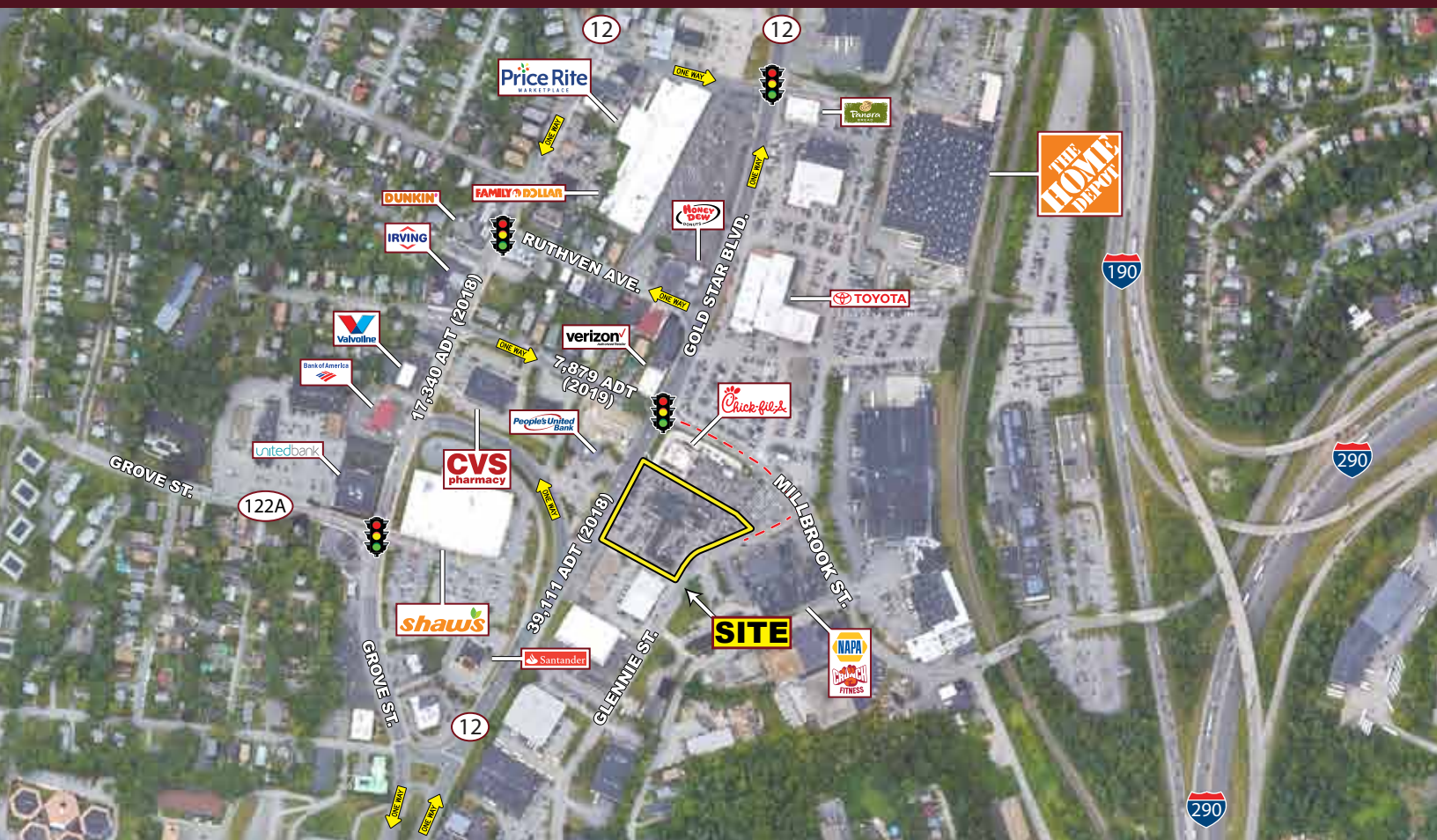


GOLD STAR CROSSING ★ UNDER CONSTRUCTION

70 Gold Star Boulevard (Route 12), Worcester, Massachusetts

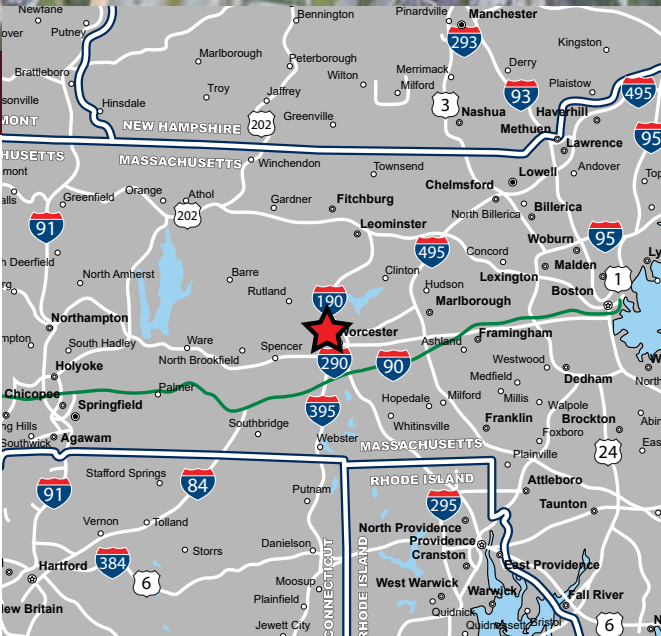
JOIN CONVENIENTMD, KELLY'S ROAST BEEF AND JERSEY MIKE'S + FALL 2023 DELIVERY



AVAILABLE FOR LEASE

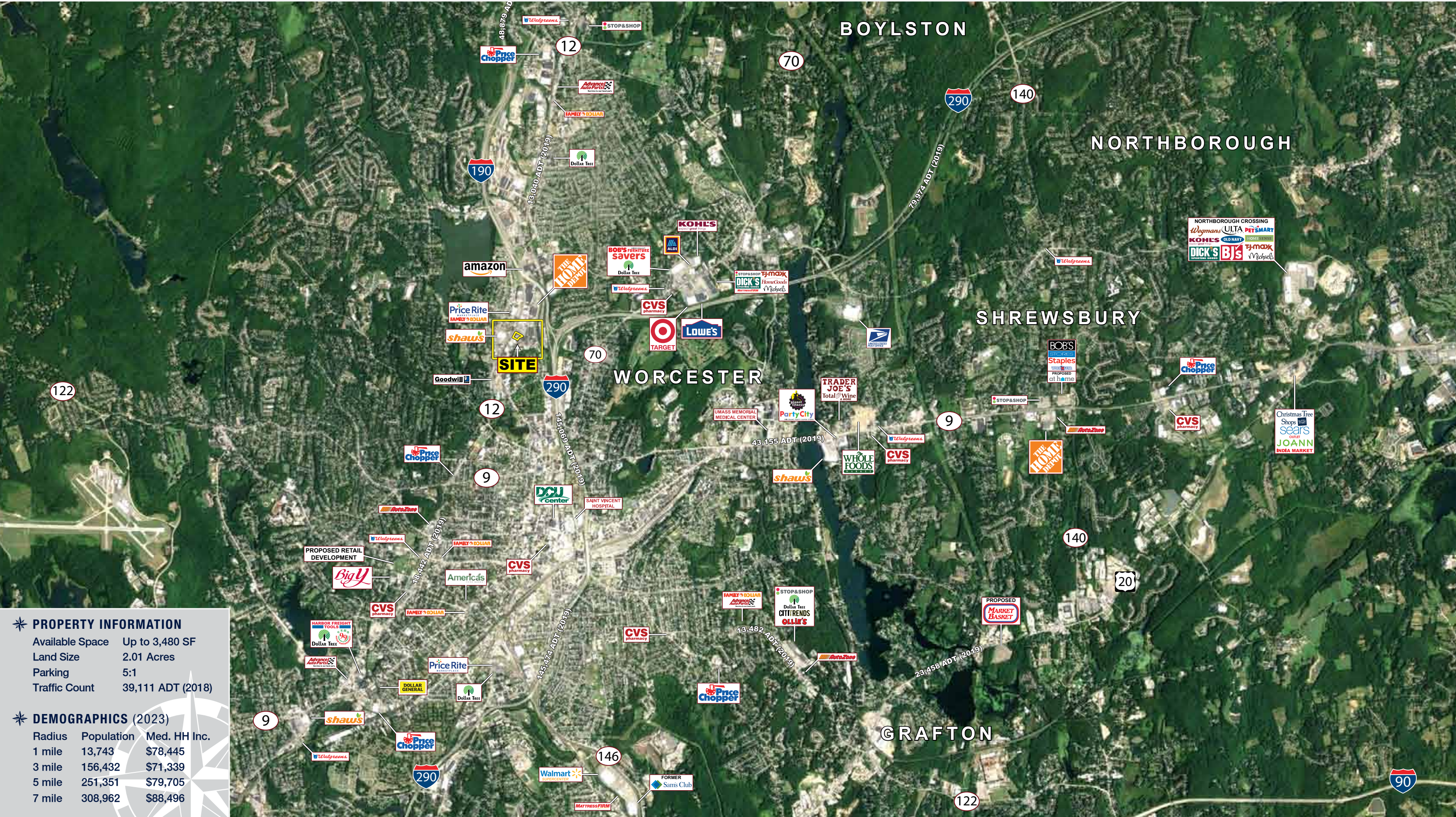
PROPERTY HIGHLIGHTS

- » Under Construction
- » 3,480 SF - Subdividable to 1,908 SF & 1572 SF
- » Conveniently Located on Gold Star Blvd
- » Join ConvenientMD, Kelly's Roast Beef and Jersey Mike's
- » Fall 2023 Delivery
- » Shares Access with High-Volume Chick-fil-A
- » Over 39,000 Cars Per Day
- » Excellent Visibility & Access
- » Dominant Regional Trade Area



GOLD STAR CROSSING ★ UNDER CONSTRUCTION

70 Gold Star Boulevard (Route 12), Worcester, Massachusetts



★ **PROPERTY INFORMATION**

Available Space	Up to 3,480 SF
Land Size	2.01 Acres
Parking	5:1
Traffic Count	39,111 ADT (2018)

★ **DEMOGRAPHICS (2023)**

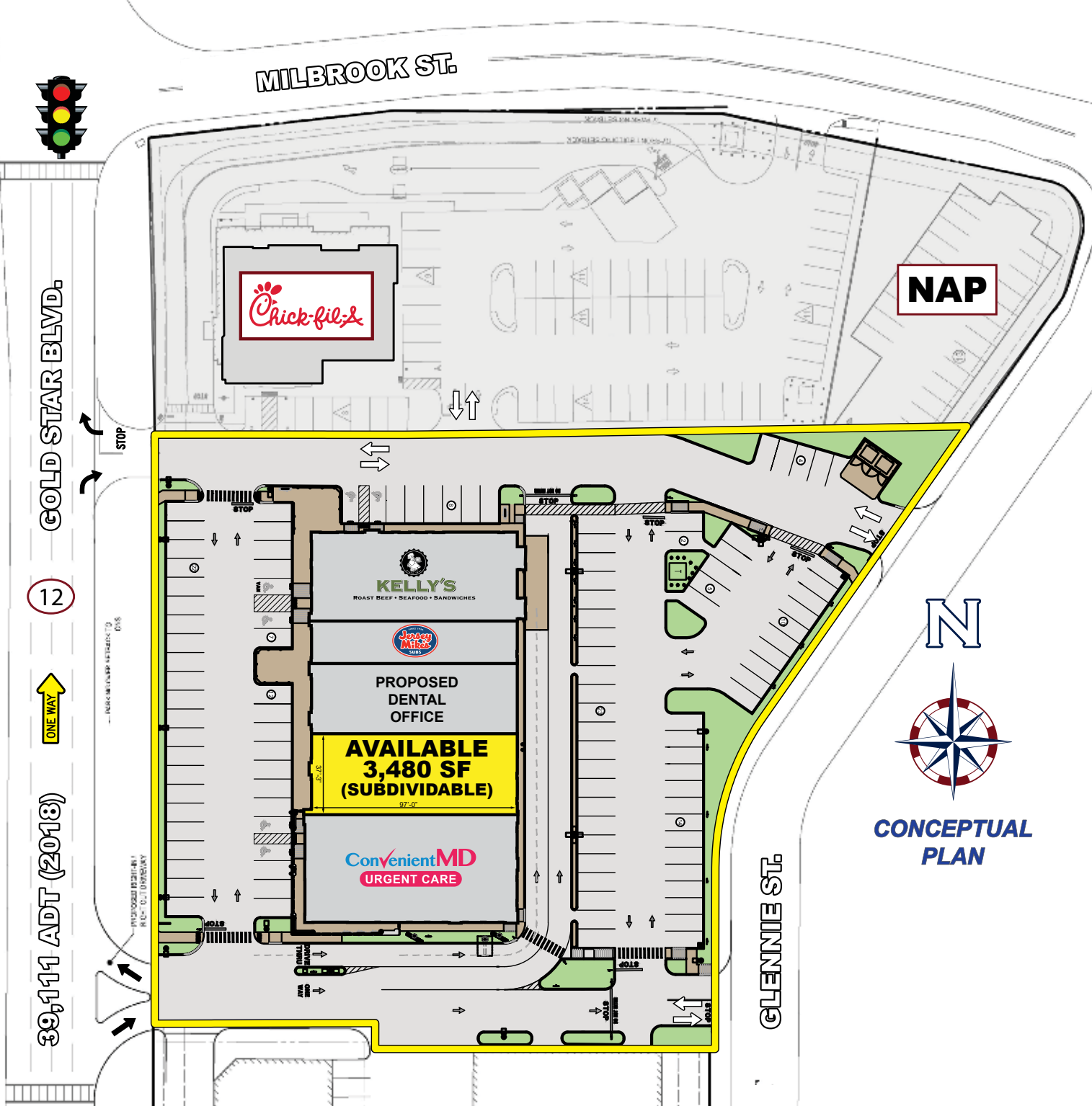
Radius	Population	Med. HH Inc.
1 mile	13,743	\$78,445
3 mile	156,432	\$71,339
5 mile	251,351	\$79,705
7 mile	308,962	\$88,496

GOLD STAR CROSSING ✦ UNDER CONSTRUCTION

70 Gold Star Boulevard (Route 12), Worcester, Massachusetts







Gold Star Crossing - 70 Gold Star Boulevard (Route 12), Worcester, MA



EASTERN
RETAIL PROPERTIES

FOR MORE INFORMATION CONTACT:

Andrew Bonica

781.849.9011

abonica@easternretail.com

Sam Peterson

781.849.9016

speterson@easternretail.com

P 781.849.9010 + F 781.849.9050 + www.easternretail.com + 25 Braintree Hill Office Park, Suite 305 + Braintree, MA 02184

The information above has been obtained from sources believed reliable. While we do not doubt its accuracy, we have not verified it and make no guarantee, warranty or representation about it. It is your responsibility to independently confirm its accuracy and completeness. Any projections, opinions, assumptions or estimates used are for example only and do not represent the current or future performance of the property. The value of this transaction to you depends on tax and other factors, which should be evaluated by your tax and financial advisors. You and your advisors should conduct a careful, independent investigation of the property to determine to your satisfaction, the suitability of the property for your needs.