

URBAN WAREHOUSE & OFFICE SPACE

60 Fremont Street, Worcester, Massachusetts



AVAILABLE FOR LEASE

PROPERTY HIGHLIGHTS

- » **First Floor**
 - 17,611 SF of Warehouse
 - Drive-in Door & 4 Loading Docks
- » **Second Floor**
 - 14,441 SF of R&D / Flex Space
 - Freight Elevator
 - 9,826 SF of Office
- » **Third Floor**
 - 10,320 SF of R&D / Flex Space
 - Freight Elevator
- » HVAC-RTV's for all Spaces
- » Parking - 209 Spaces / 1.9 : 1,000 SF



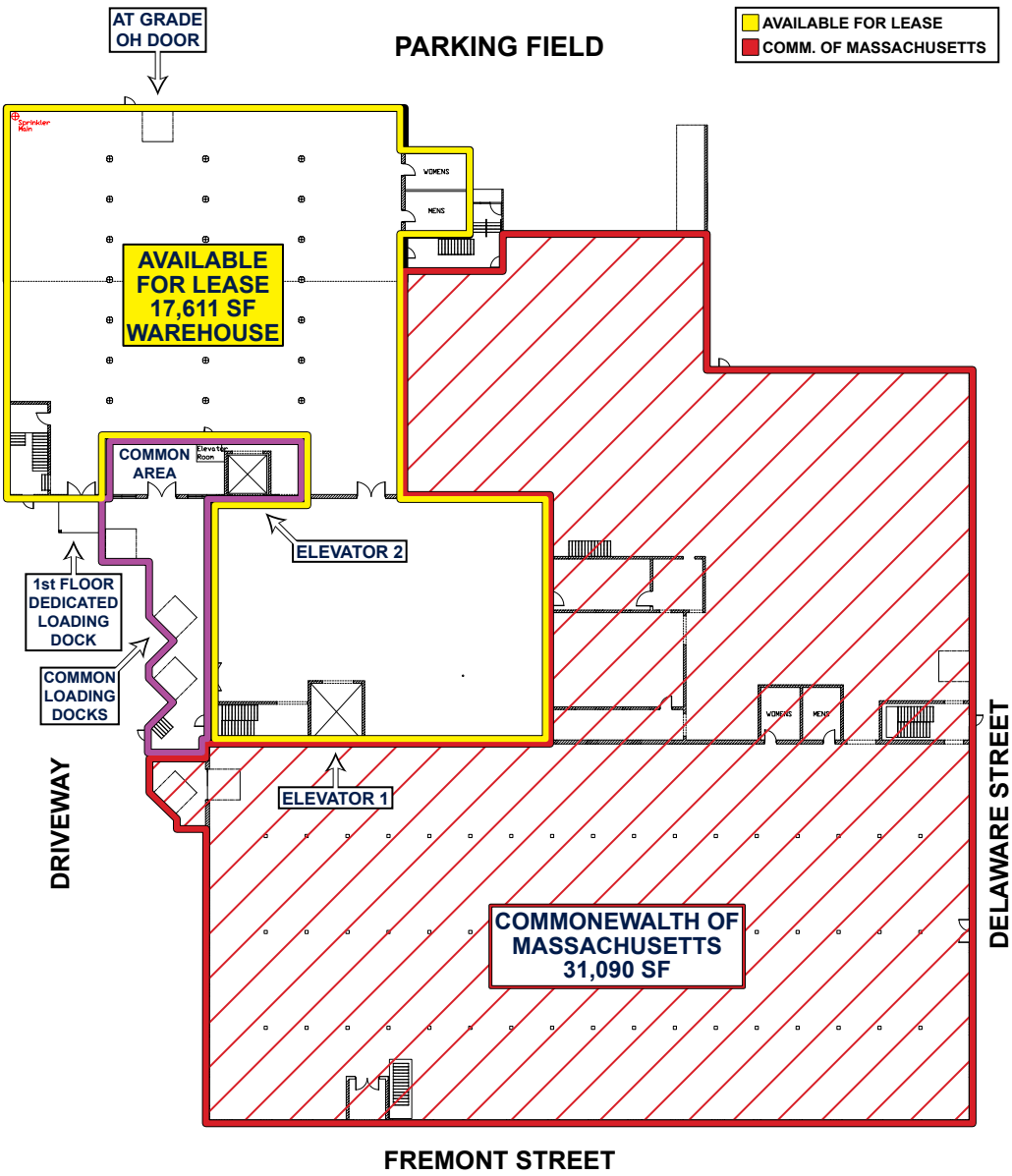
URBAN WAREHOUSE & OFFICE SPACE

60 Fremont Street, Worcester, Massachusetts

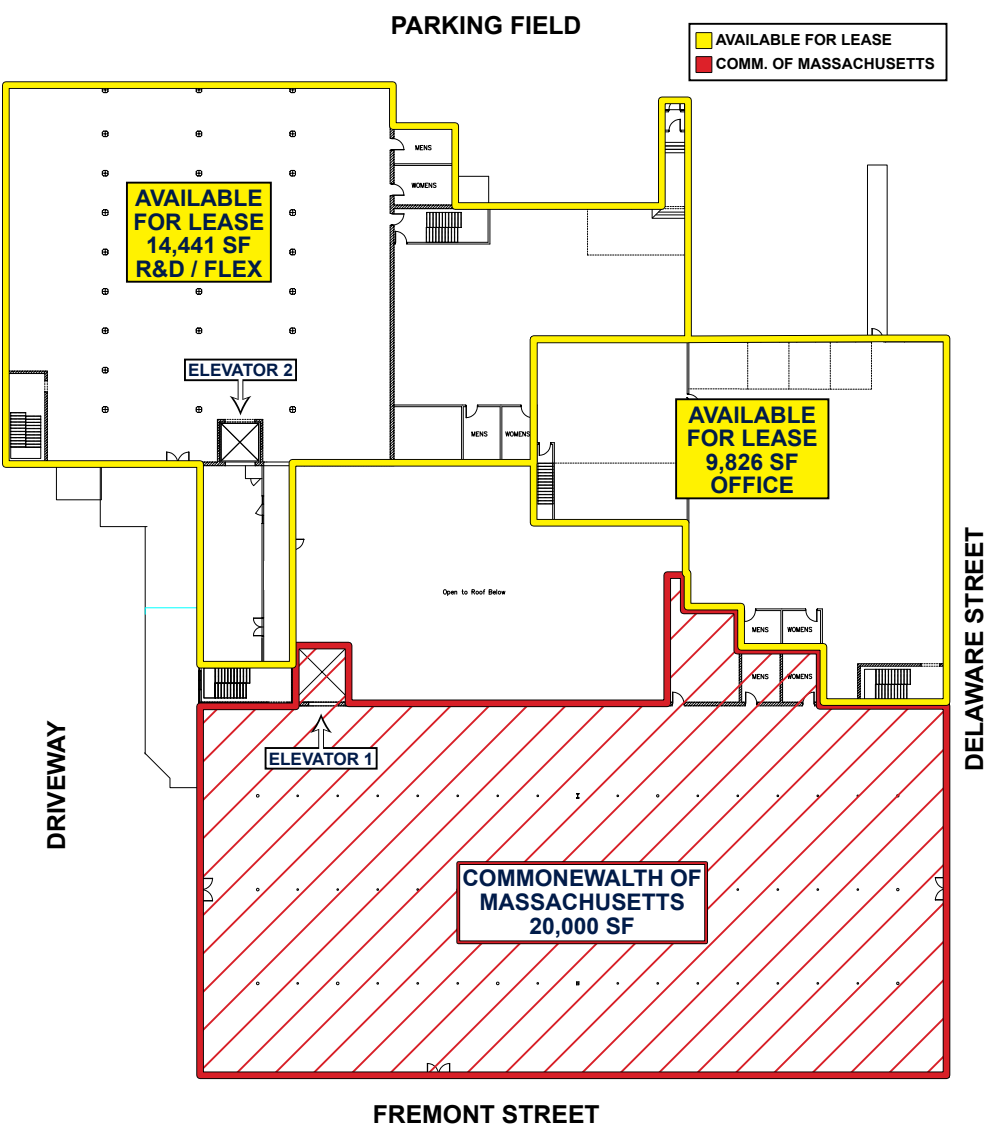


EASTERN
RETAIL PROPERTIES

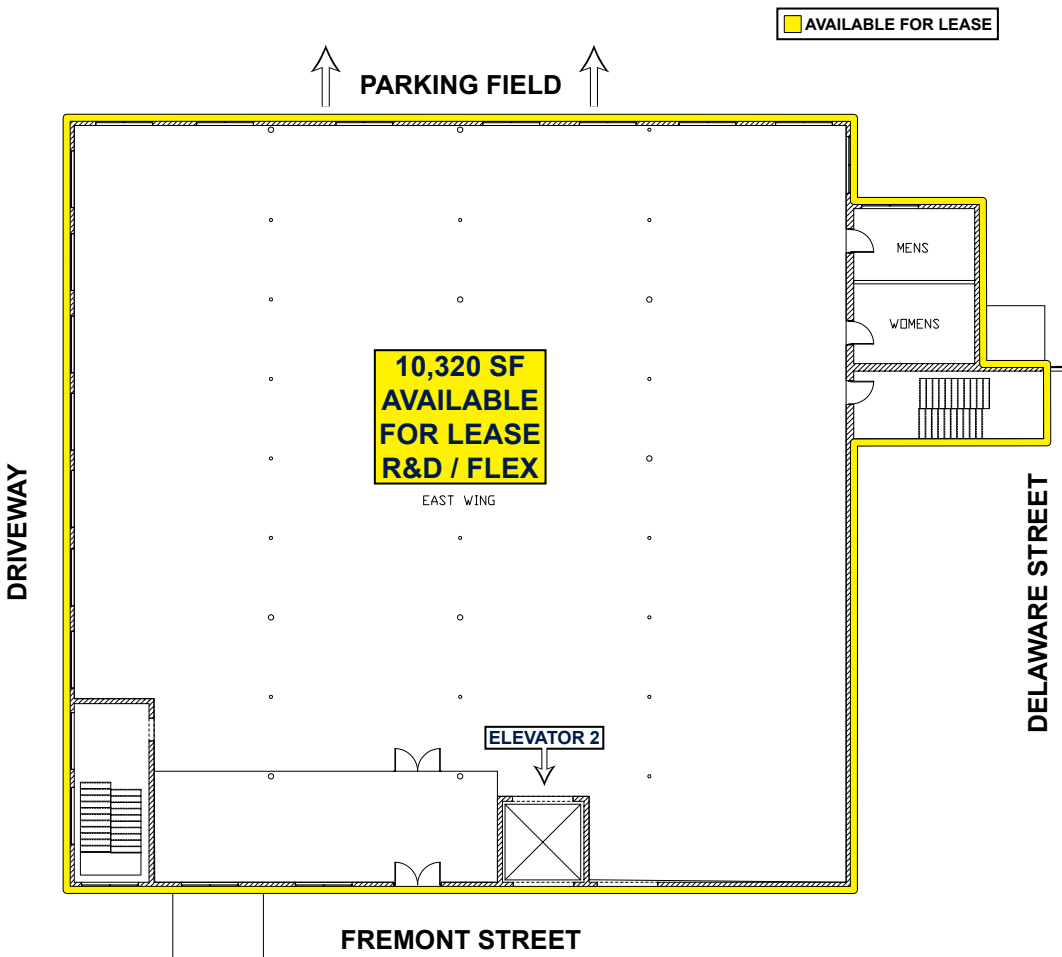
First Floor



Second Floor

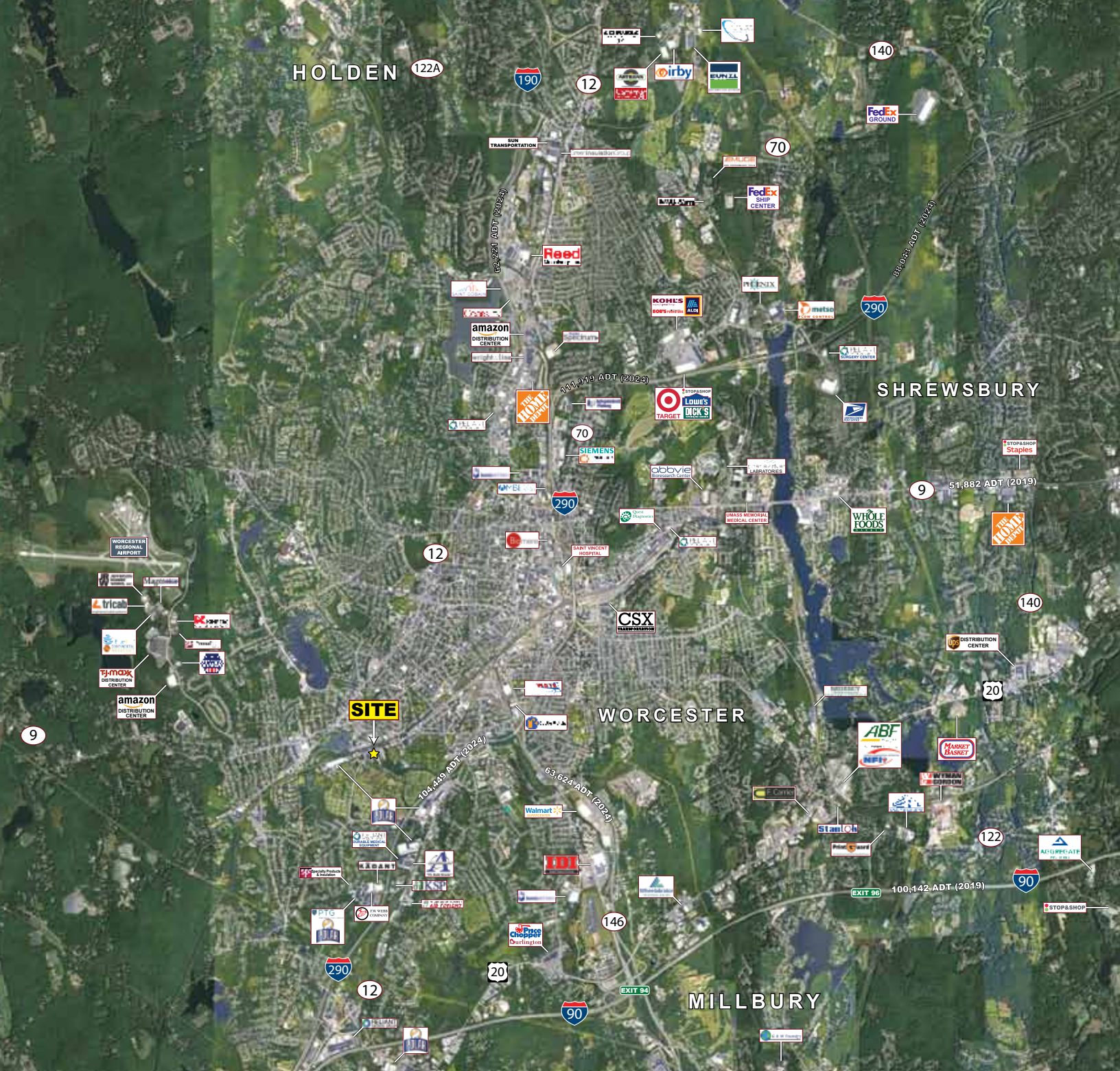


Third Floor



★ **DEMOGRAPHICS (2024)**

Radius	Population	Med. HH Inc.
1 mile	21,814	\$52,095
3 mile	141,962	\$66,959
5 mile	230,355	\$75,144
7 mile	297,208	\$84,237



Urban Warehouse & Office Space - 60 Fremont Street, Worcester, Massachusetts



EASTERN
RETAIL PROPERTIES

FOR MORE INFORMATION CONTACT:

Joe Morrison

781.264.6225

jmorrison@easternretail.com

Tommy Landry

781.849.9015

tlandry@easternretail.com

P 781.849.9010 + F 781.849.9050 + www.easternretail.com + 25 Braintree Hill Office Park, Suite 404 + Braintree, MA 02184

The information above has been obtained from sources believed reliable. While we do not doubt its accuracy, we have not verified it and make no guarantee, warranty or representation about it. It is your responsibility to independently confirm its accuracy and completeness. Any projections, opinions, assumptions or estimates used are for example only and do not represent the current or future performance of the property. The value of this transaction to you depends on tax and other factors, which should be evaluated by your tax and financial advisors. You and your advisors should conduct a careful, independent investigation of the property to determine to your satisfaction, the suitability of the property for your needs.